



**PRINCETON UNIVERSITY
ART MUSEUM
PLANNING BOARD
PRESENTATION
MARCH 4, 2021**



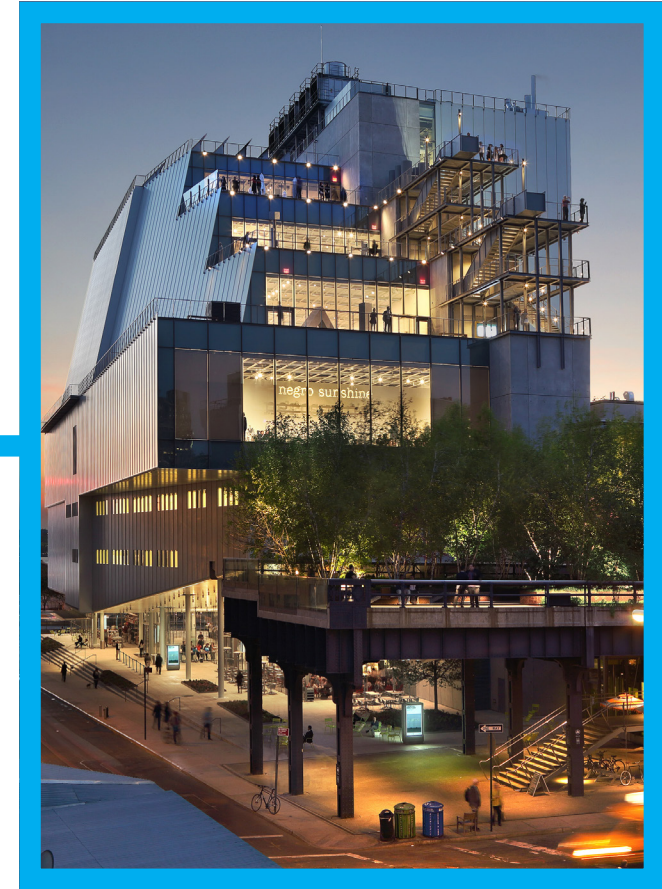
**SMITHSONIAN
NMAAHC**
ADJAYE ASSOCIATES



**THE STUDIO MUSEUM
IN HARLEM**
SCHEDULED COMPLETION 2023



**WHITNEY MUSEUM
OF AMERICAN ART**
COOPER ROBERTSON



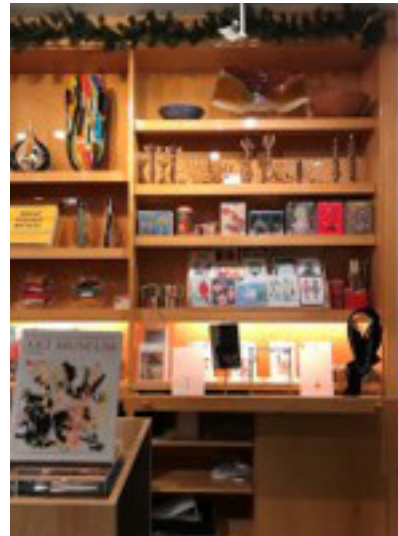
PROJECT GOALS

- PROVIDE A GATEWAY TO THE UNIVERSITY'S INTELLECTUAL RESOURCES
- FUNCTION AS A CENTER FOR THE VISUAL ARTS AND HUMANITIES
- ENHANCE ACCESS TO THE VISUAL ARTS, INCLUDING DISPLAY OF/ACCESS TO THE COLLECTIONS
- ENGAGE EQUITABLY WITH THE GLOBE-SPANNING CULTURES WITHIN THE MUSEUM'S PURVIEW
- DEEPEN THE USE OF THE MUSEUM & ITS COLLECTIONS IN TEACHING, RESEARCH, AND PUBLIC ENGAGEMENT
- PROVIDE WELCOMING EDUCATIONAL EXPERIENCES FOR UNIVERSITY AND COMMUNITY AUDIENCES



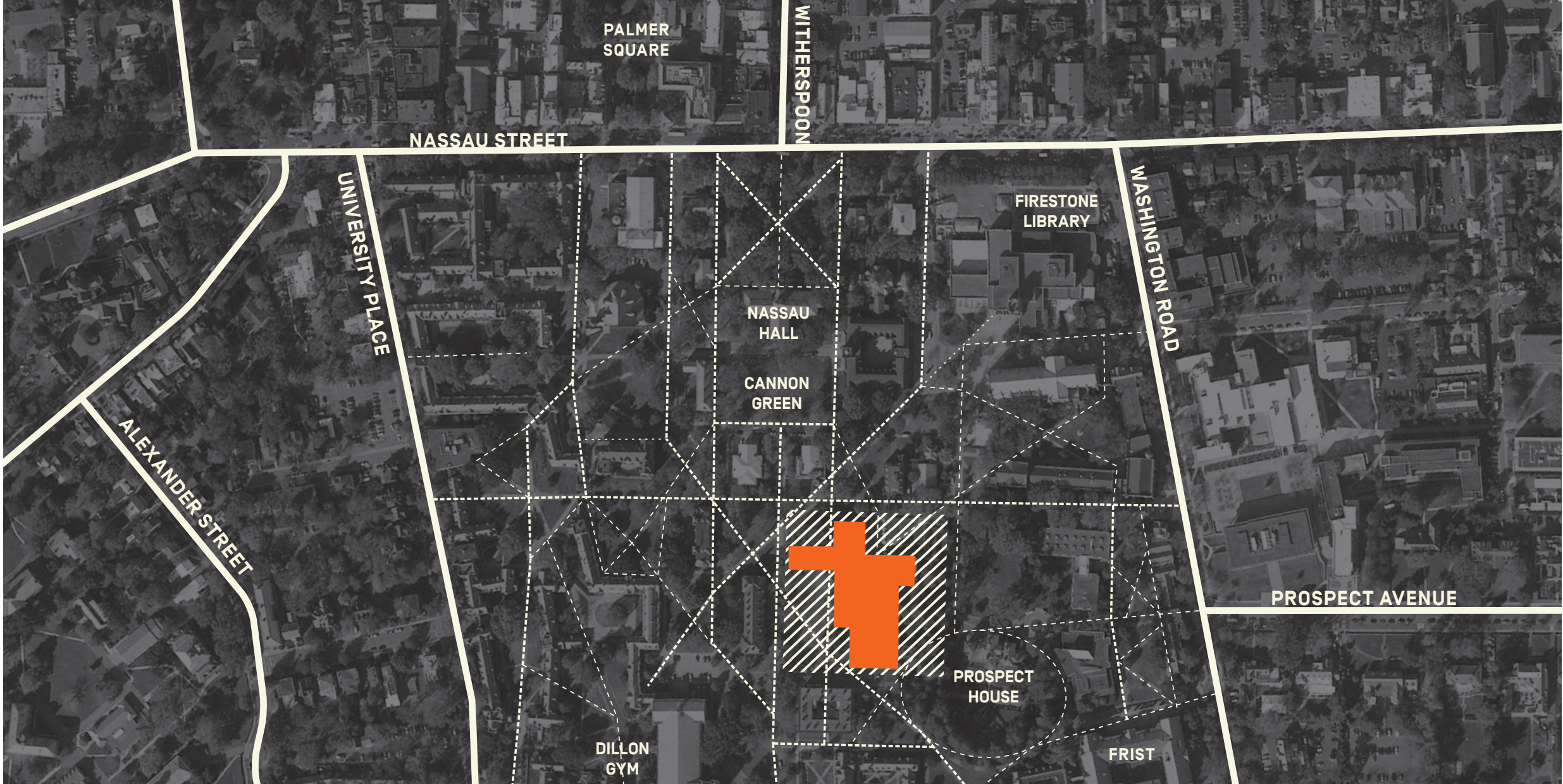
KEY BENEFITS

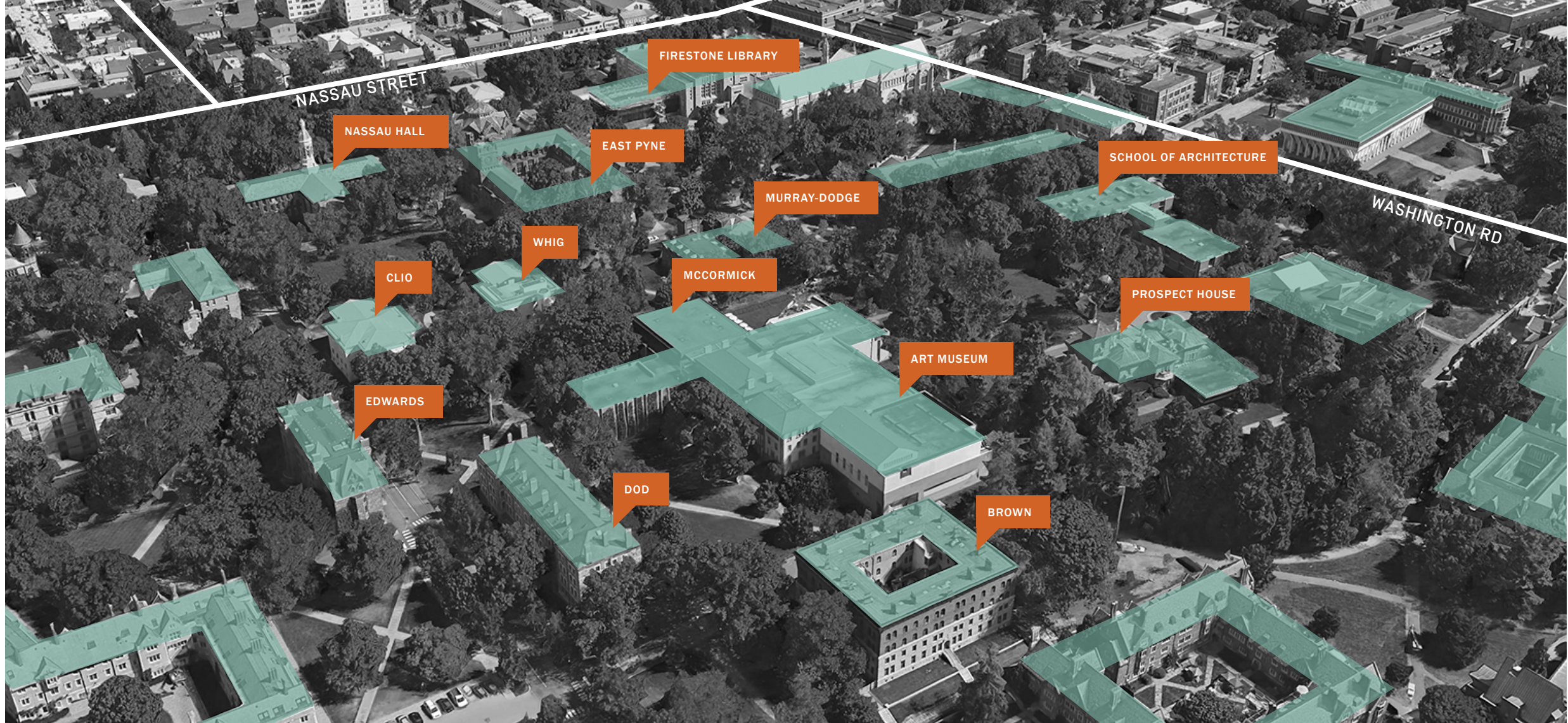
- CREATE ARCHITECTURE THAT ENHANCES ACCESSIBILITIES AND OVERCOMES BARRIERS TO PARTICIPATION
- CREATE ARCHITECTURE WORTHY OF THE QUALITY OF THE COLLECTIONS
- CREATE ARCHITECTURE THAT IS OF OUR TIME BUT RESPONDS TO THE CONTEXT OF THE SITE
- ENHANCE ACCESS TO THE COLLECTIONS THROUGH DIVERSE STRATEGIES OF VISUAL ENGAGEMENT
- PLACE DIVERSE CULTURES ON EQUITABLE FOOTING
- RETAIN RELATIONSHIPS BETWEEN MUSEUM/ART & ARCHAEOLOGY/MARQUAND, BUT SEPARATE FUNCTIONS
- INCREASE THE MUSEUM'S VISIBILITY
- CREATE A BUILDING THAT IS “ALL FRONTS AND NO BACKS”





CONTEXT & PLANNING PRINCIPLES



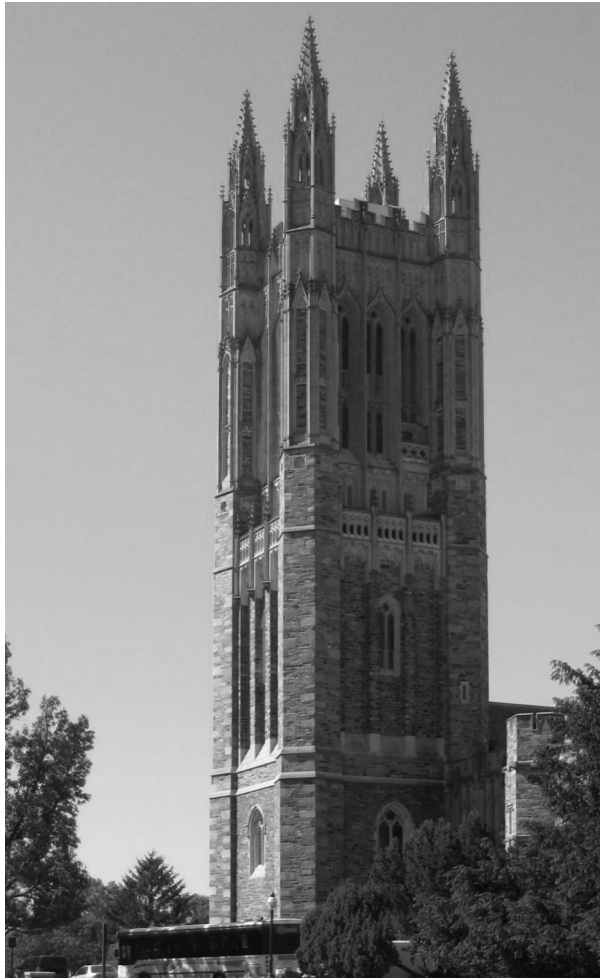


EXISTING MUSEUM: 72,000 GSF
 PROPOSED MUSEUM: 125,000 GSF

PROPOSED DEPT. OF A&A: 19,000 GSF
 TOTAL NEW CONSTRUCTION: 144,000 GSF



MCCORMICK HALL
STEINMANN AND CAIN



GRADUATE COLLEGE



ROBERTSON HALL
MINORU YAMASAKI



HOLDER HALL

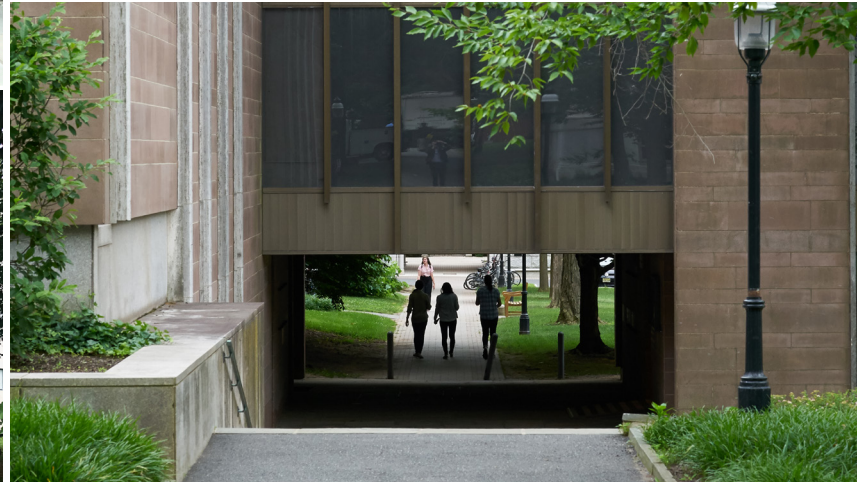
PRINCETON UNIVERSITY CHAPEL



PRINCETON TRANSIT CENTER RICK JOY



WHIG HALL



HEAD CREST, LATE 19TH CENTURY
EFUT ARTIST



CHRIST AND MARY IN GLORY
WITH GROUP OF SAINTS, 1380-1390
CENNI DI FRANCESCO DI SER CENNI



GUANYIN SEATED IN
ROYAL EASE POSE, CA. 1250
SOUTHERN SONG DYNASTY, CHINESE



UNTITLED, 1990
KIKI SMITH



PERSPECTIVE I, 1962
RUTH BERNHARD



COLLECTIONS DISPLAY ON SINGLE FLOOR

MENIL COLLECTION COURTYARD RENZO PIANO



VILLA BORGHESE FLAMINIO PONZIO



MUSEUM OF HISTORIC ART A. PAGE BROWN
(ORIGINAL PRINCETON ART MUSEUM, DEMOLISHED IN 1960'S)



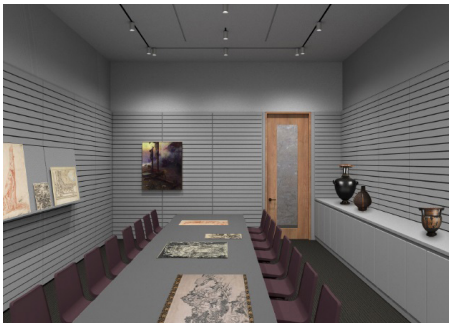
YALE CENTER FOR BRITISH ART LOUIS I. KAHN



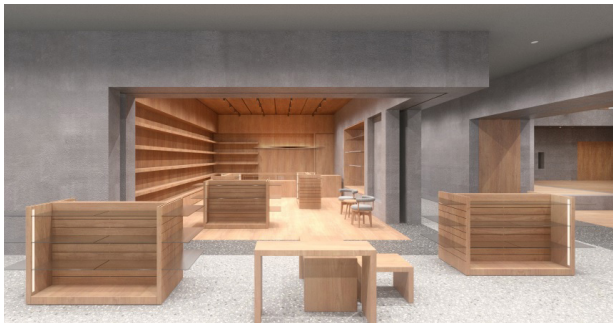


BUILDING PROGRAM

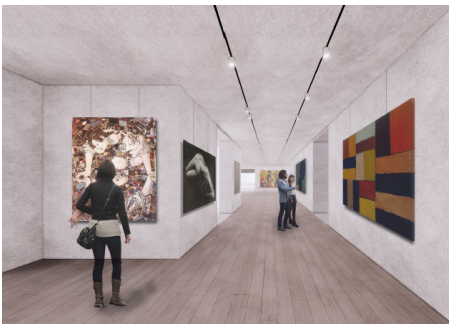
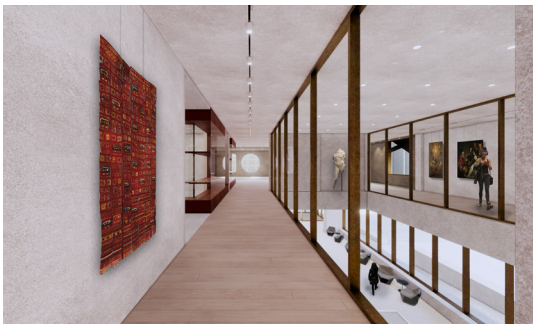
MUSEUM EDUCATIONAL SPACES, 76% INCREASE:- GRAND HALL - OBJECT STUDY ROOMS - CREATIVITY LABS



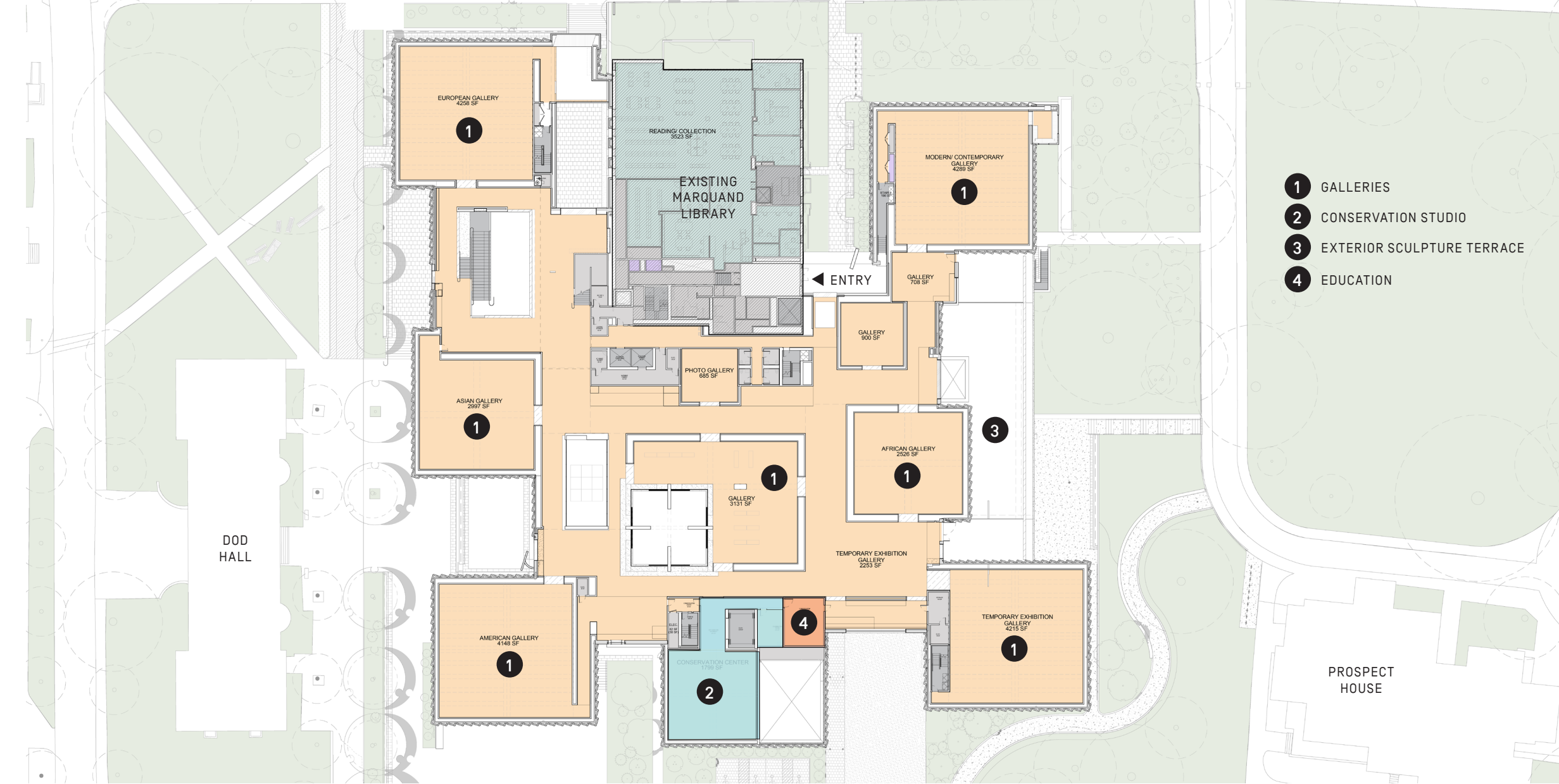
VISITOR AMENITIES, 80% INCREASE: - CAFE - RETAIL STORE - ART WALKS

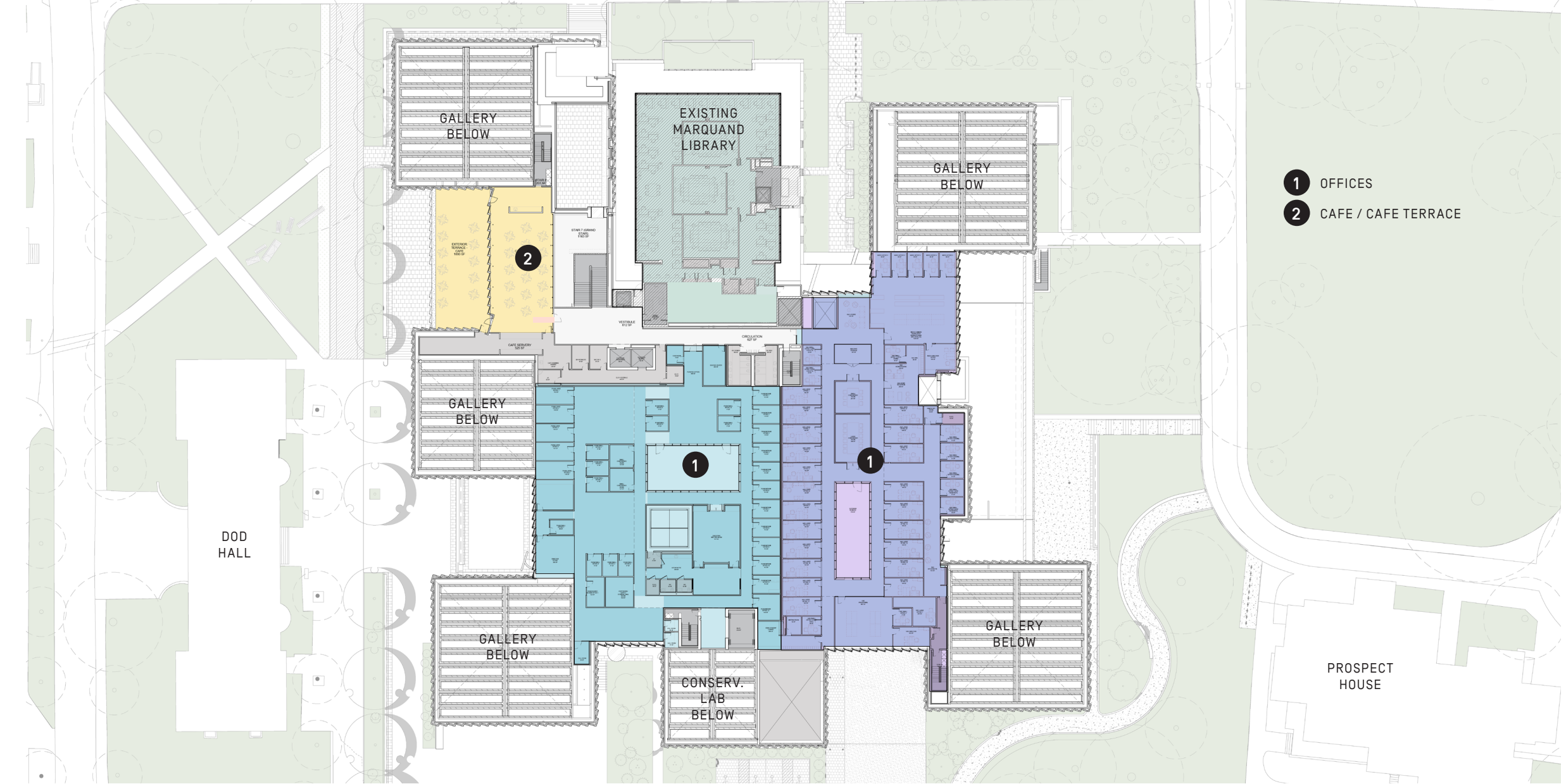


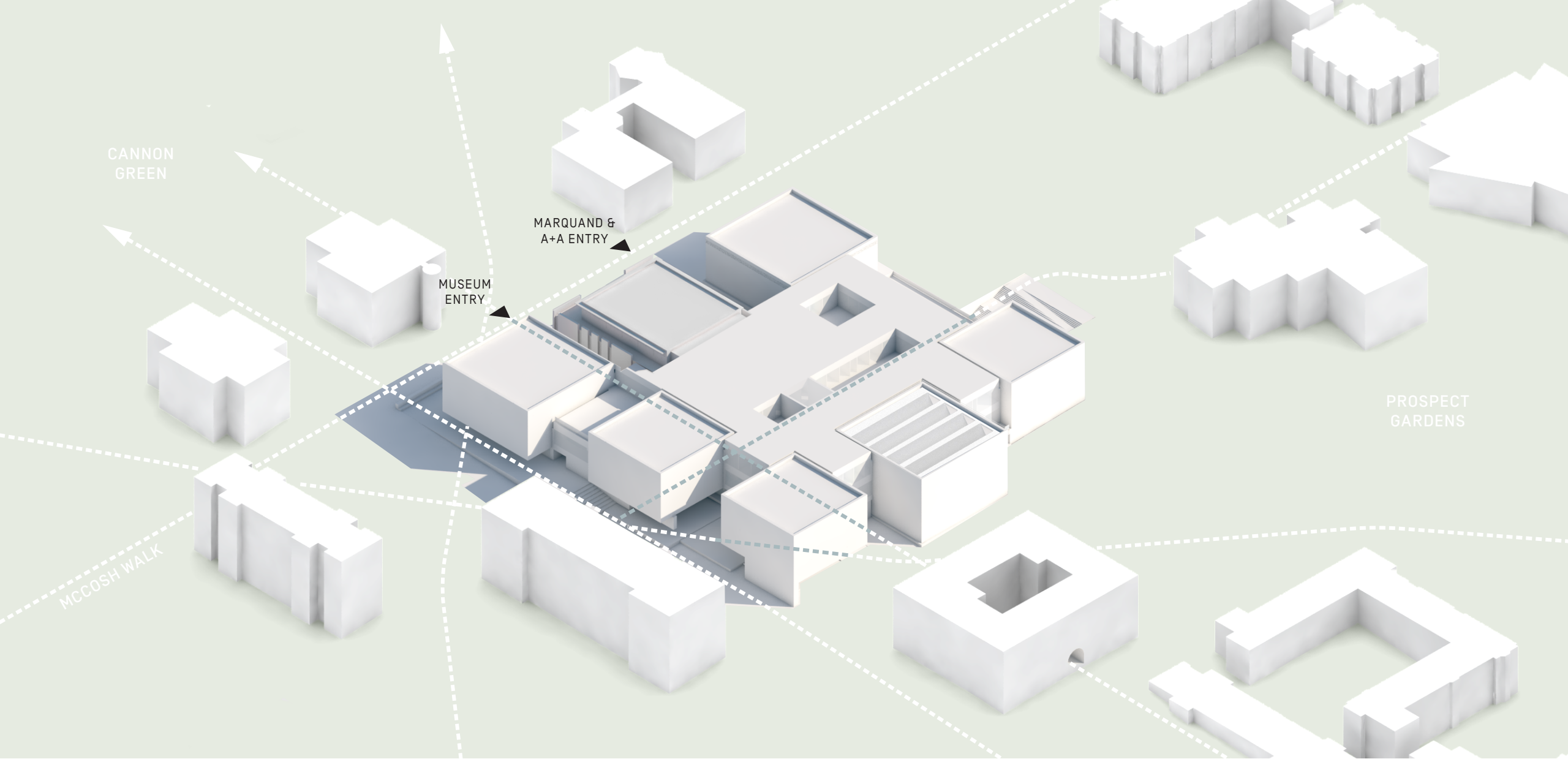
EXHIBITION AREA, 38% INCREASE

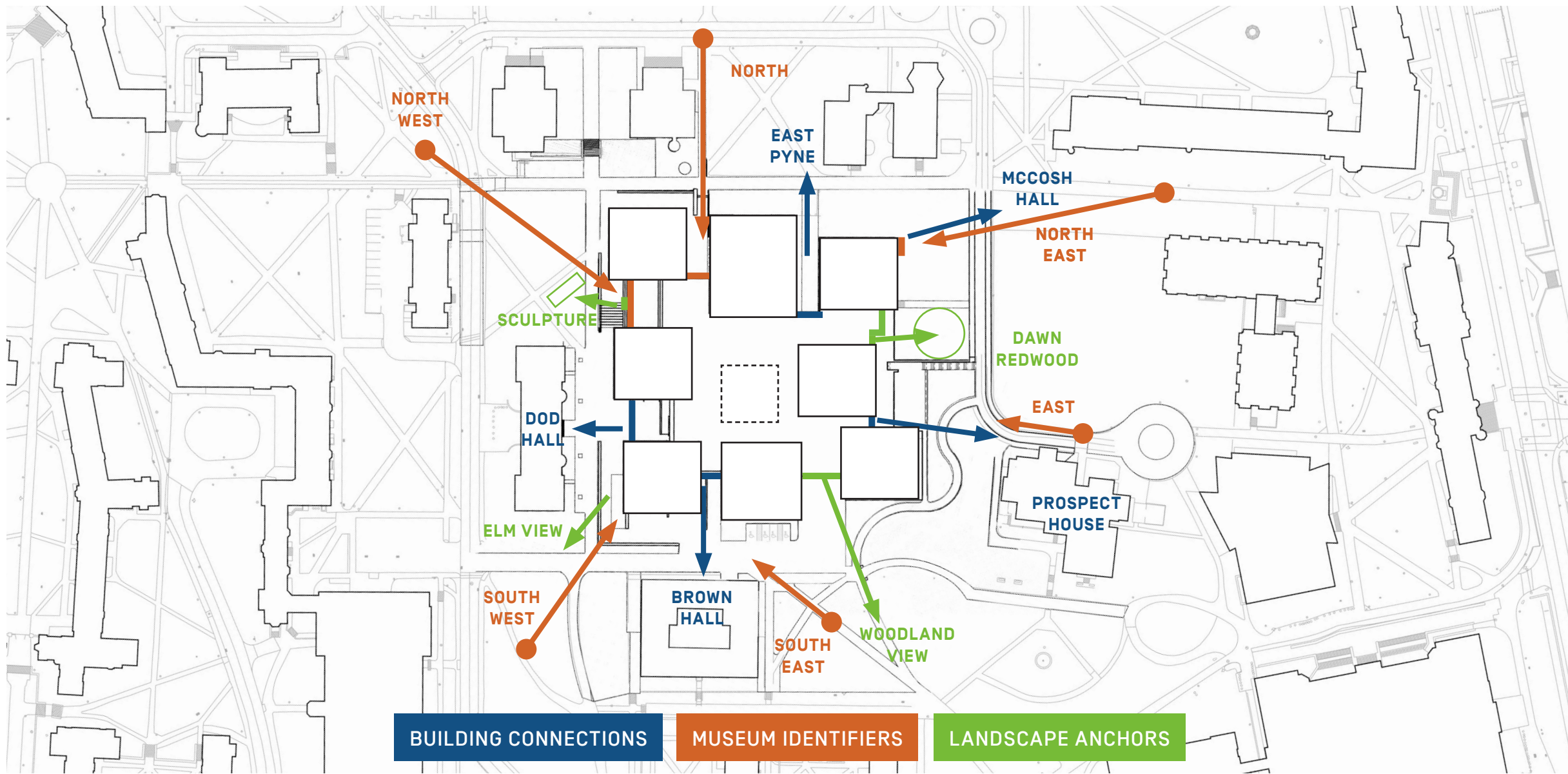








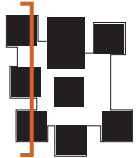
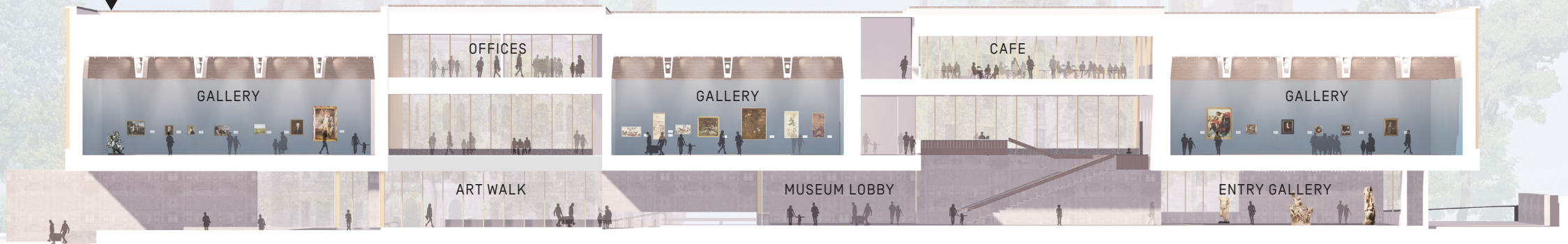




EXISTING BUILDING HEIGHT RANGE: 34'-2" (LOW ROOF) TO 60'-0" (TOP OF CRAM)

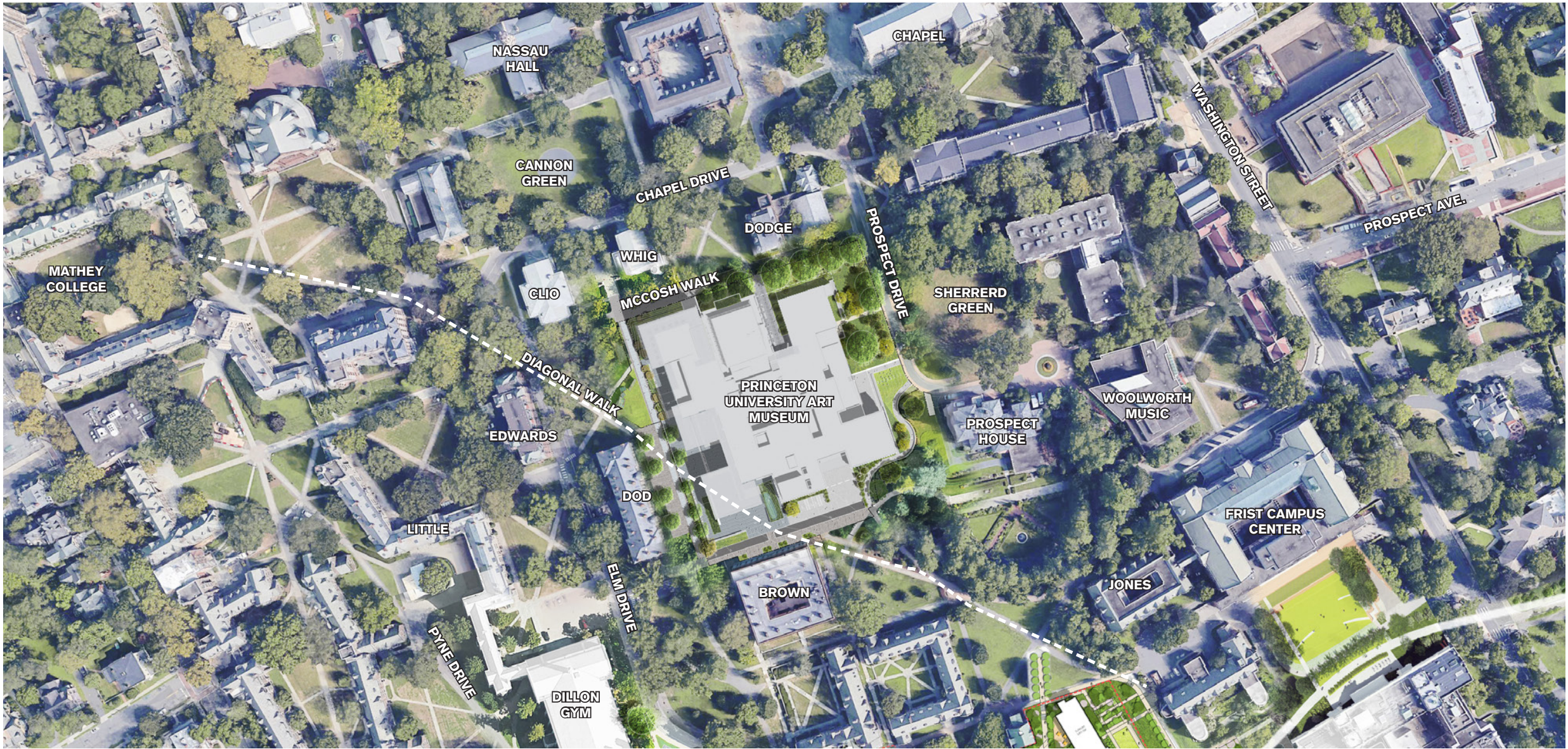
MAXIMUM BUILDING HEIGHT PERMITTED BY ZONING: 60'-0" ABOVE AVERAGE GRADE

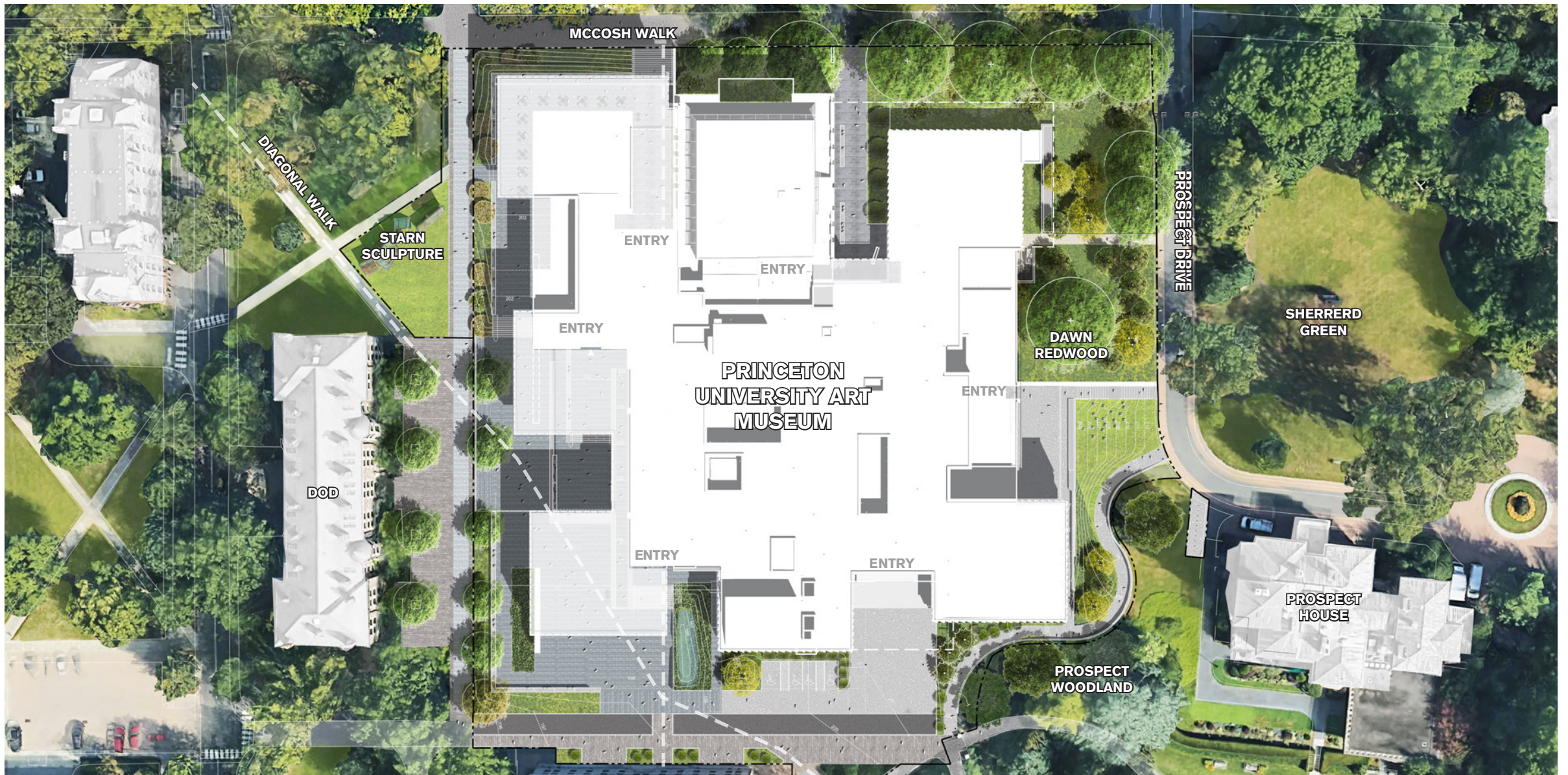
PROPOSED BUILDING HEIGHT: 47'-4" ABOVE AVERAGE GRADE

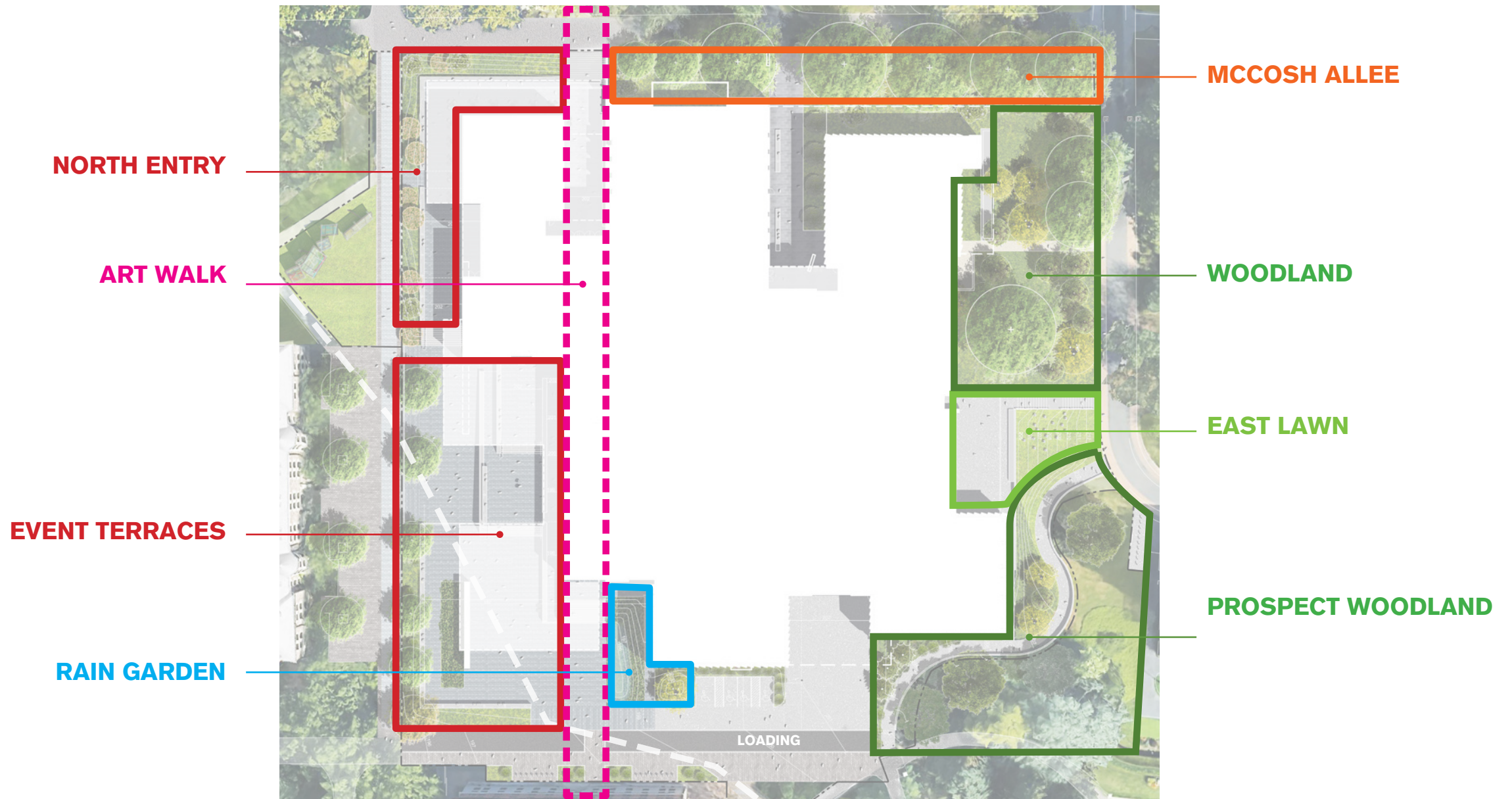




SITE PLANNING & LANDSCAPE DESIGN







18 BIKE PARKING SPOTS ADDED

2 BIKE PARKING SPOTS ADDED

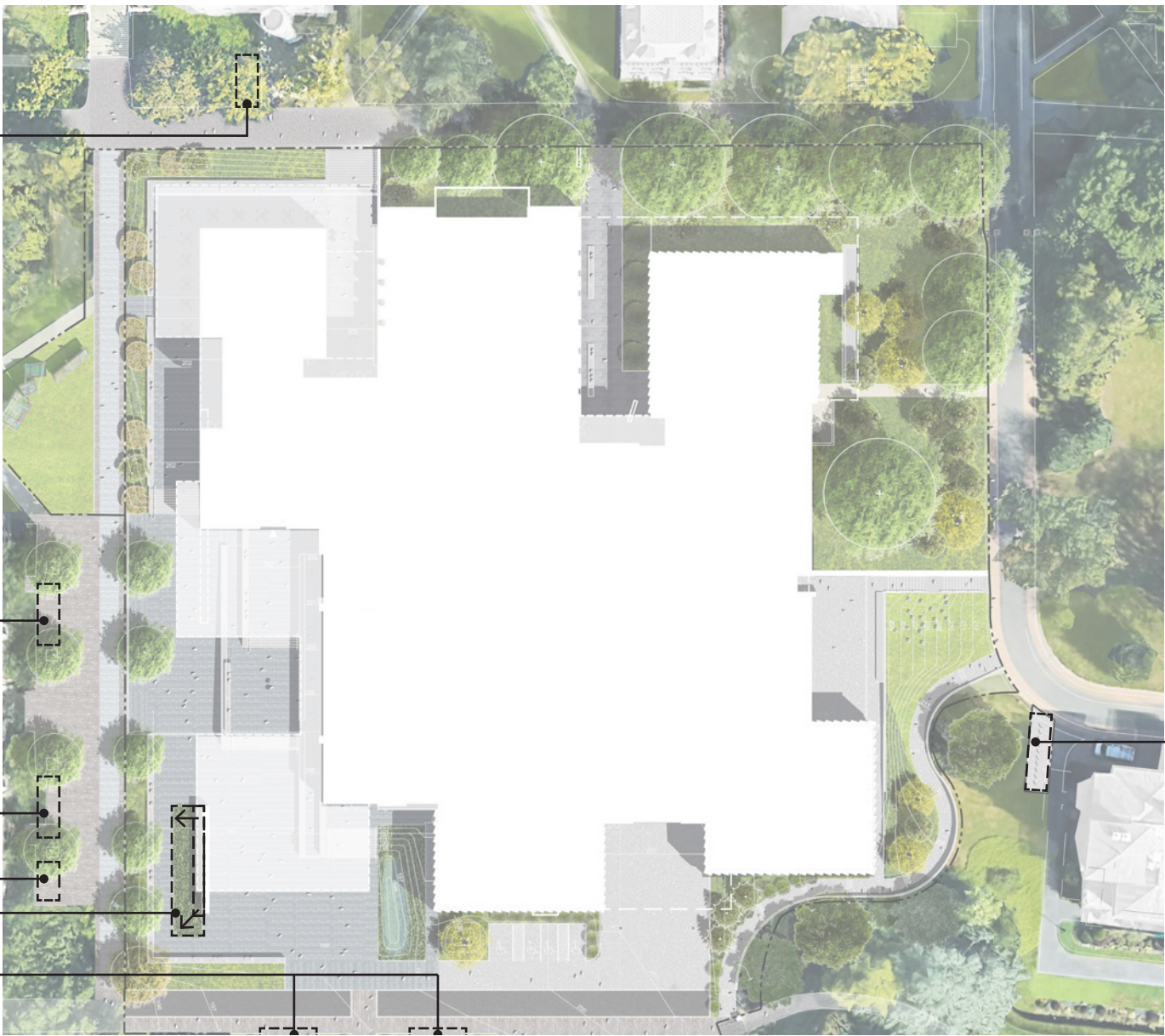
2 BIKE PARKING SPOTS ADDED

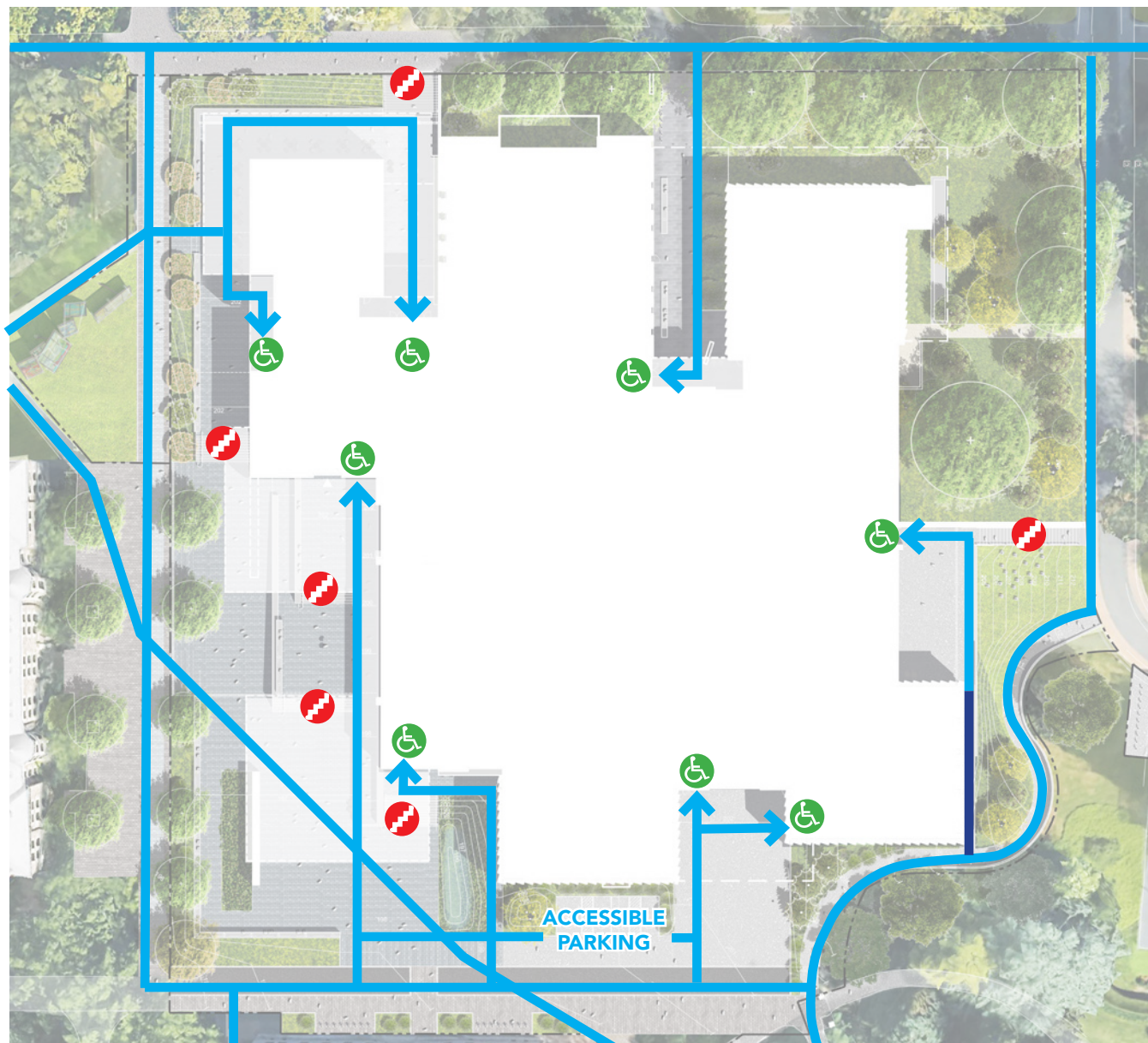
12 BIKE PARKING SPOTS ADDED

PLANTING BED ENLARGED





12 BIKE PARKING SPOTS ADDED

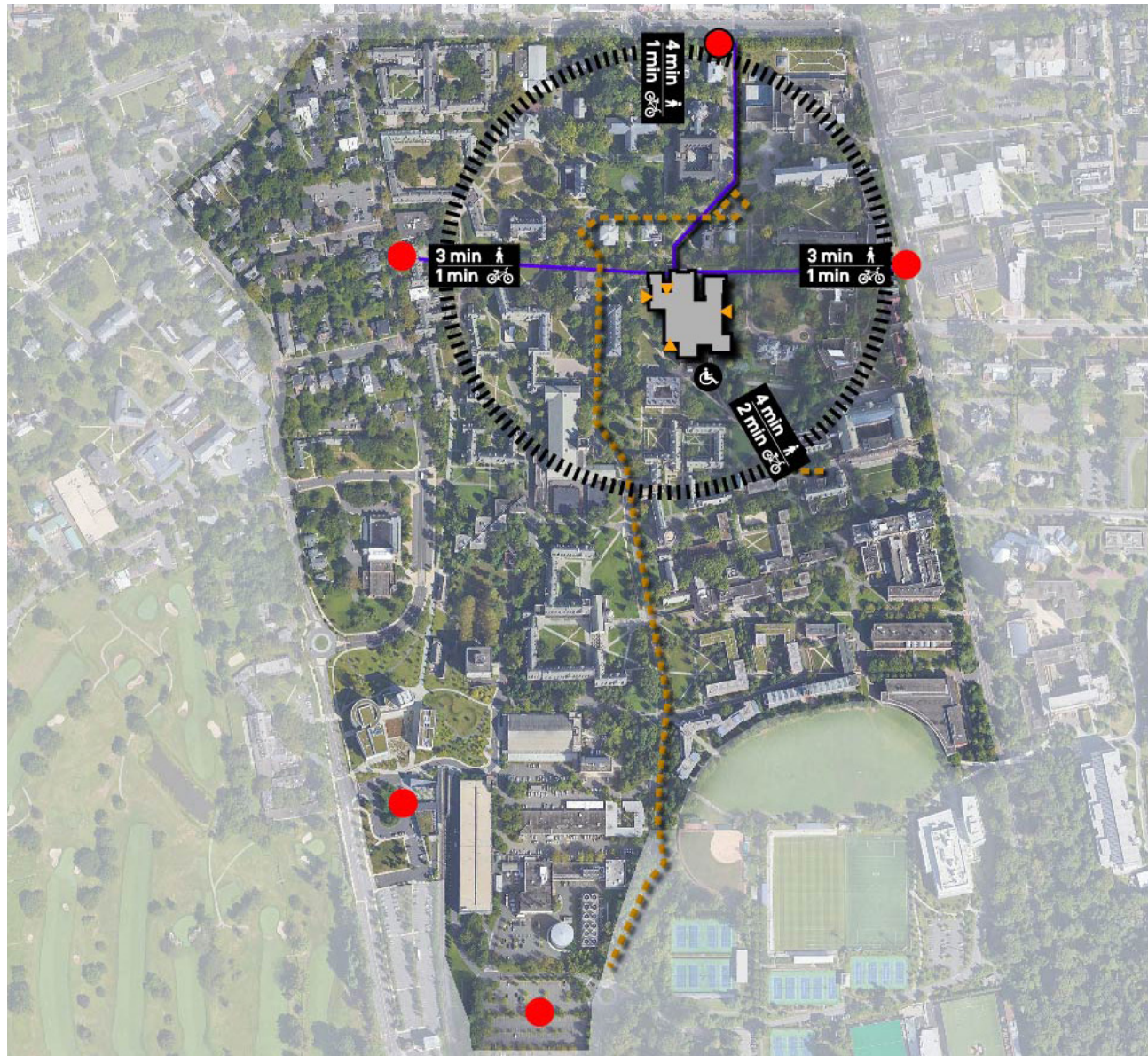
6 BIKE PARKING SPOTS ADDED



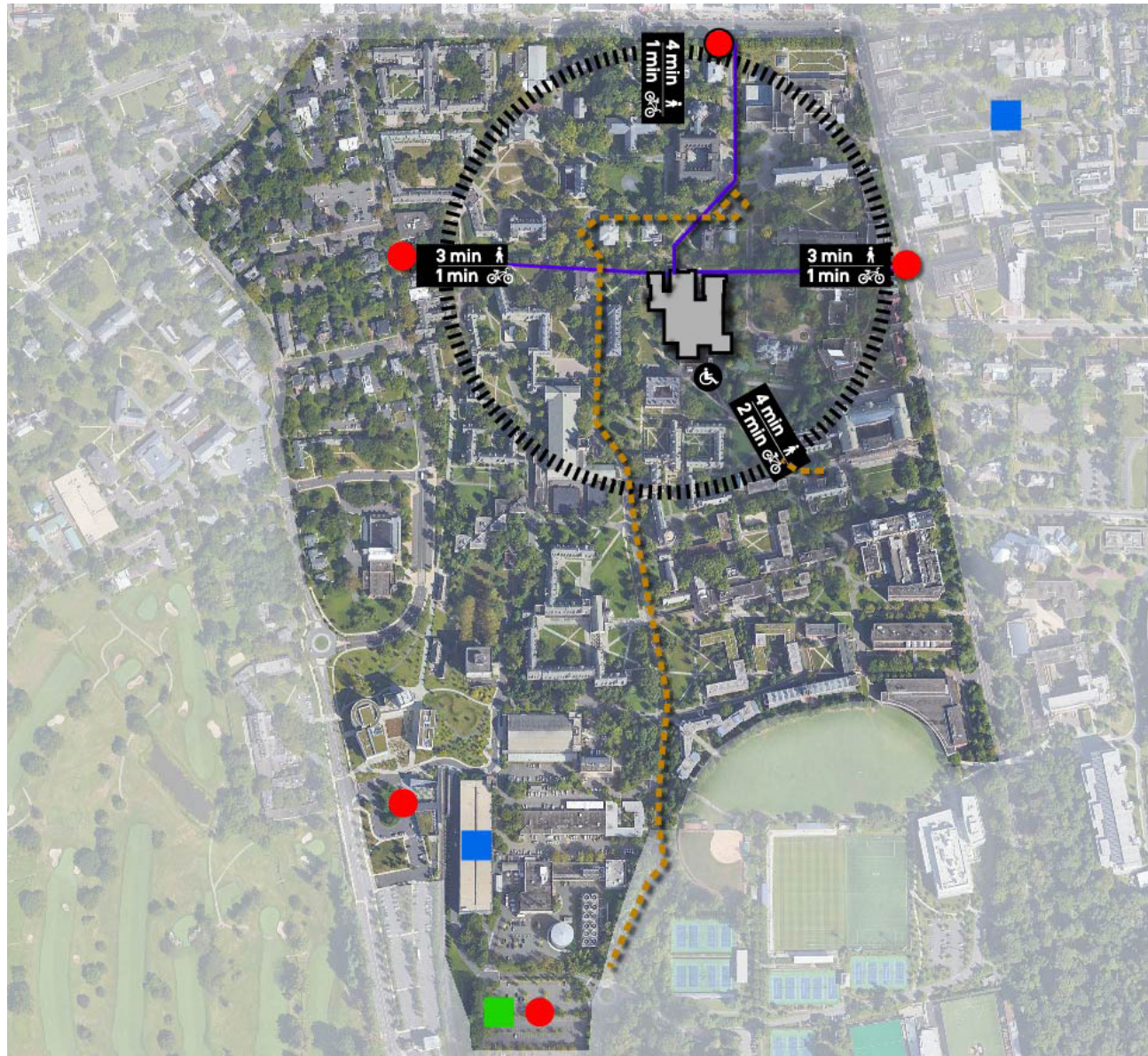


ACCESSIBLE ROUTES & PARKING

-  ACCESSIBLE ENTRANCE
-  STEPS
-  0-5% SLOPE
-  5% - 8.3% SLOPE



- ACCESSIBLE ENTRANCES
- 4 ACCESSIBLE PARKING SPOTS
- ART MUSEUM TIGER TRANSIT STOP
- TIGER TRANSIT STOP
- VISITOR DROP OFF
- CAMPUS WALKS

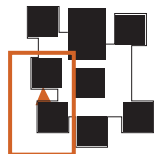
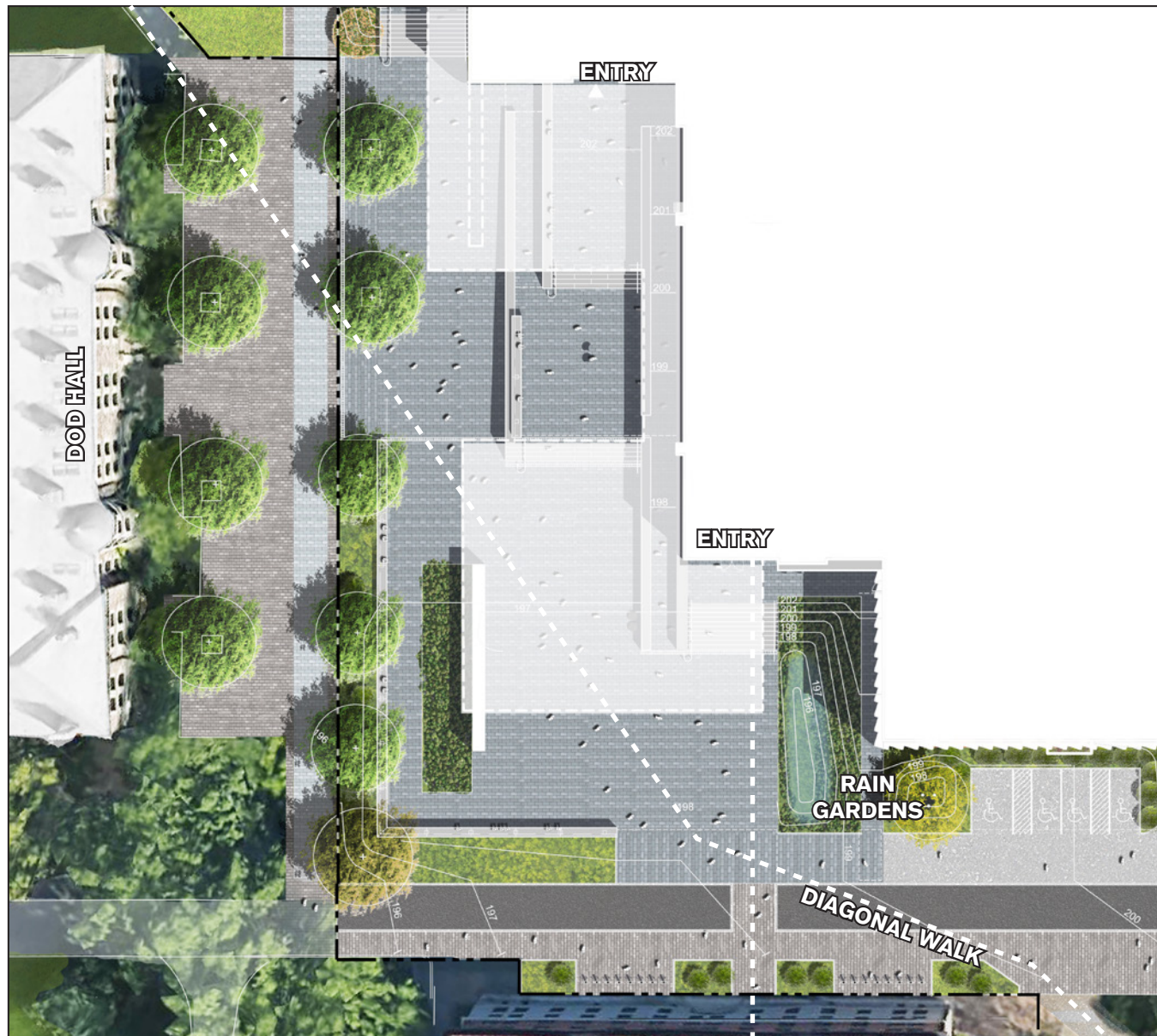


- VISITOR PARKING AT ALL TIMES
- VISITOR PARKING AT NIGHT AND WEEKENDS
- ART MUSEUM TIGER TRANSIT STOP
- TIGER TRANSIT STOP
- CAMPUS WALKS



01. Starn Sculpture







REUNION

WHEN: Once in May
The SW courtyard is currently used for Reunions, including 8+ tents, dance floor, A/V equipment, cooking/grilling + more.



SUMMER PICNIC

WHEN: Once in August
ATTENDANCE: 1000 people
Very involved set up on Brown/Dod Quad. Guests bring their own chairs. Includes a jazz band.



SUMMER FILM SERIES

WHEN: Three times, June, July, August
ATTENDANCE: 150-300 people
Setup on Brown/Dod quad includes an inflatable screen, rear projector, and popcorn machine on a 6' table. Rented & set up by Ultimate Outdoor Movies. Guests bring own chairs.



NASSAU STREET SAMPLER

WHEN: September
ATTENDANCE: 2,000 people
Guests begin lining up outside the Museum (with the line extending past McCosh Walk). Outside, 2 or 3 vendors sit along the side of the building with 8' tables. Setup includes a large photo backdrop and an 8' table next to it for props.



YOGA ON THE LAWN

WHEN: June
ATTENDANCE: 30 people
Typically on the lawn next to East Pyne near the sculpture table. Guests then come into the Museum for refreshments.



FAMILY DAY

WHEN: Two times, October and May
ATTENDANCE: 1500 people
Outside table use (3 or 4 8' tables outside). 1,500 attendees per family day.



GRATITUDE GALA

WHEN: May
ATTENDANCE: 300 people
Check-in tables outside on terrace (2-8' tables).



DEVELOPMENT EVENTS

DINING ALFRESCO
ATTENDANCE: 20-60 people
TENTED RECEPTIONS
ATTENDANCE: 60-200 people
Space for kitchen tent, dance floor, band area, lounge area.



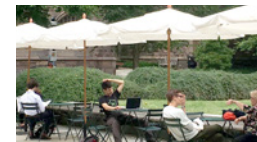
MUSIC AND DANCE PERFORMANCES

WHEN: N/A
ATTENDANCE: N/A
Currently occur on the Front Lawn along McCosh Walk.



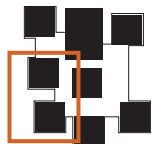
K-12 STUDENT LUNCHES

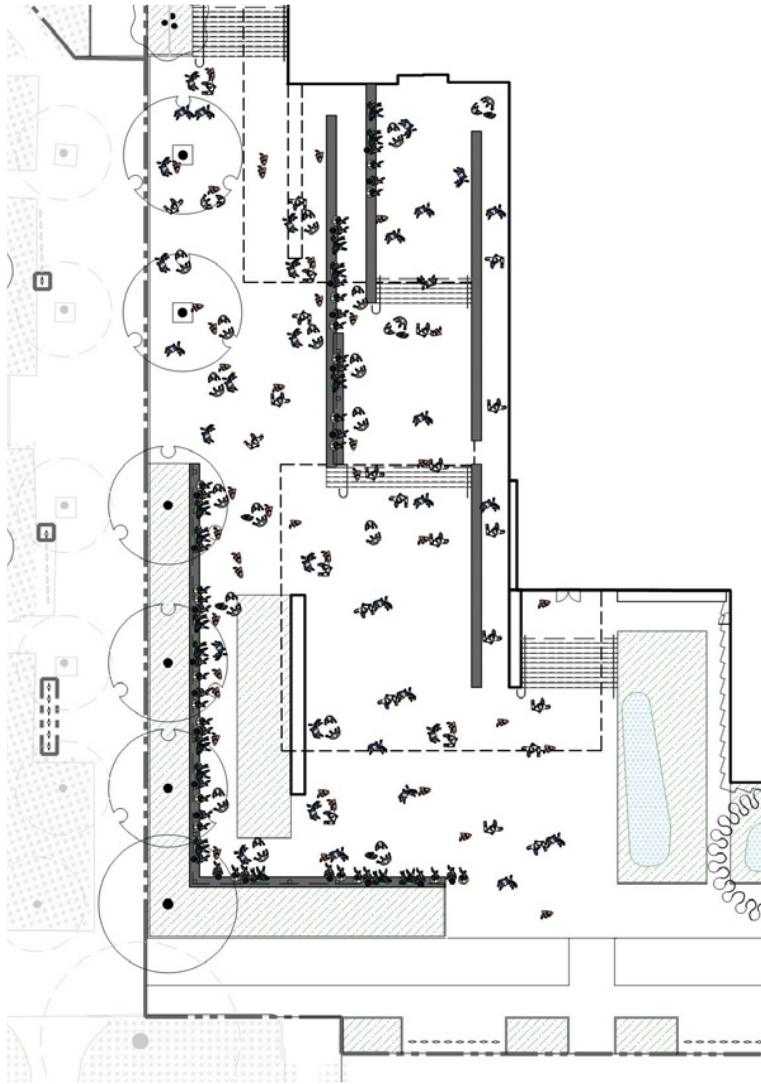
WHEN: N/A
ATTENDANCE: N/A
Currently occur on the Front Lawn along McCosh Walk.



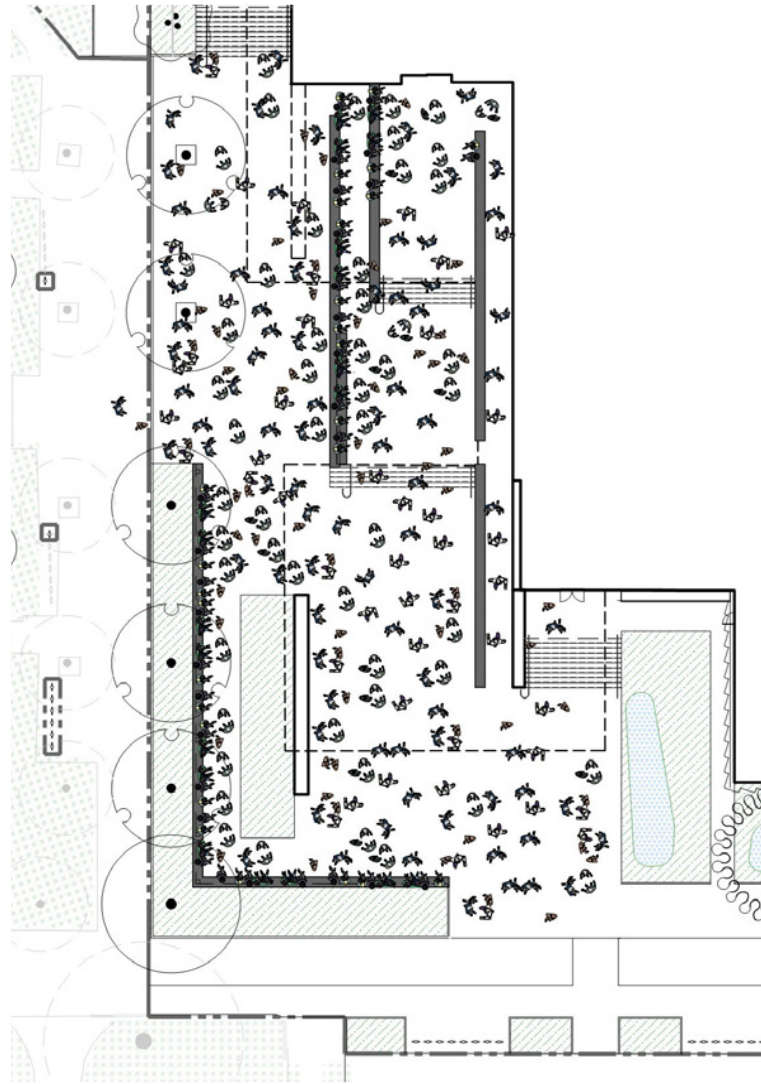
OUTDOOR CAFE SEATING

WHEN: N/A
ATTENDANCE: 8 tables

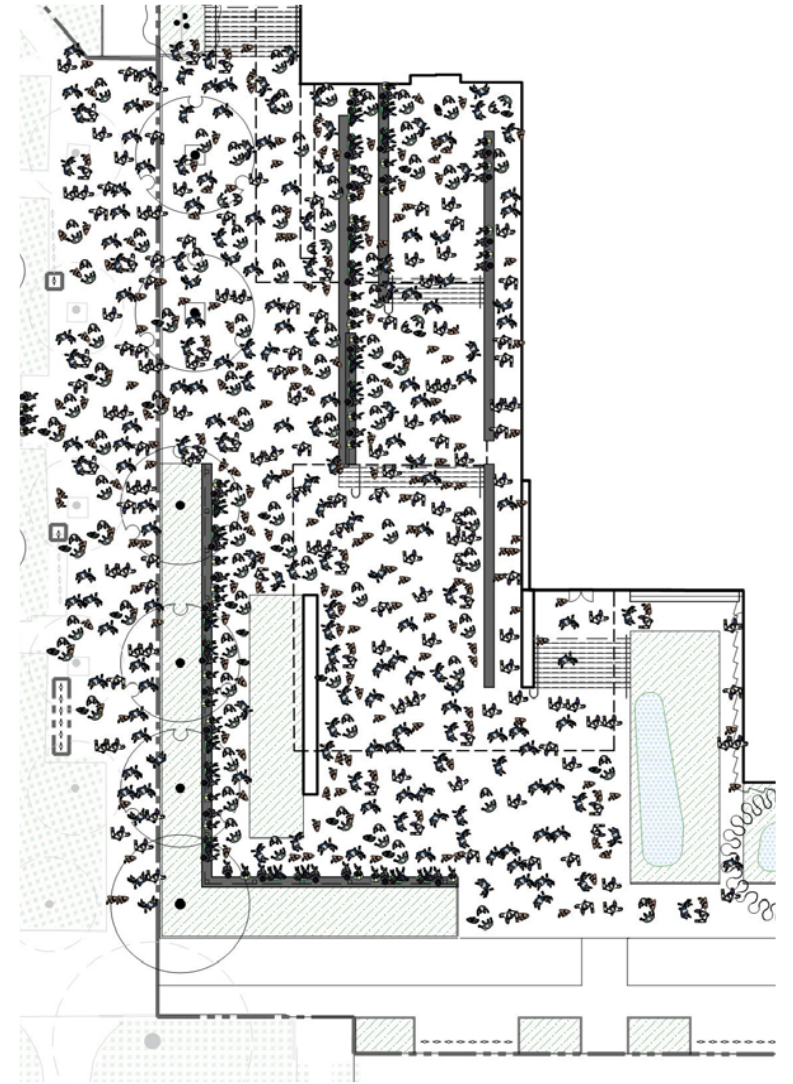




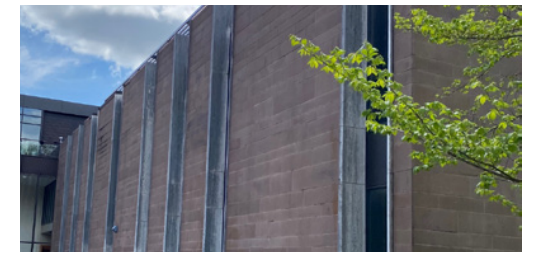
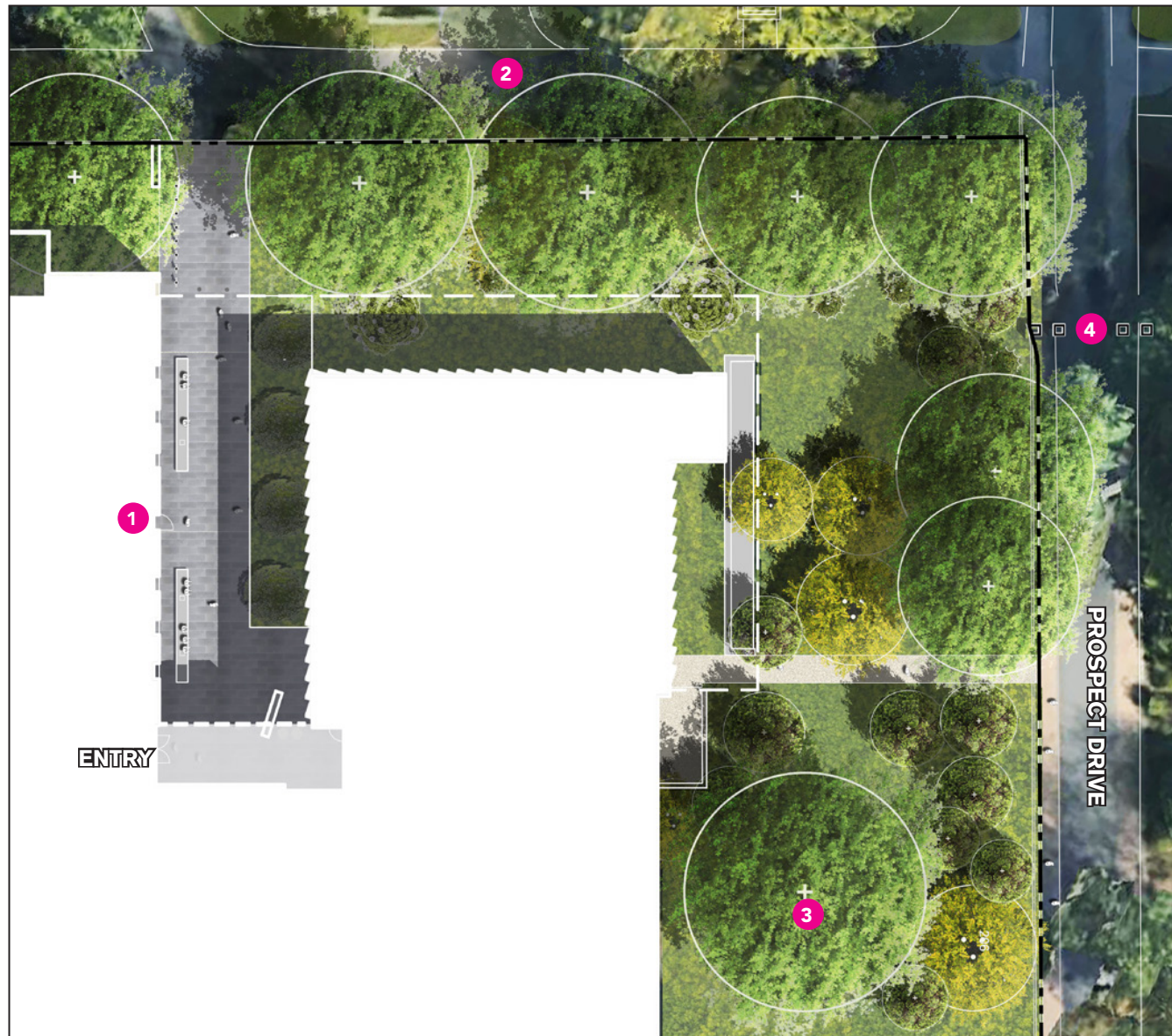
250 PEOPLE
60 SF/PERSON STANDING



500 PEOPLE
30 SF/PERSON STANDING



1000 PEOPLE
15 SF/PERSON STANDING



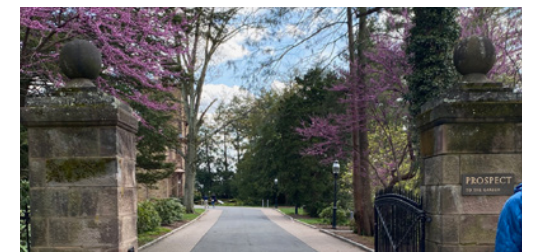
01. Marquand



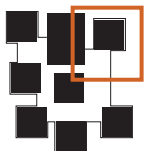
02. Mccosh Walk

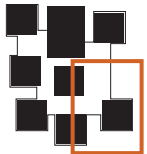
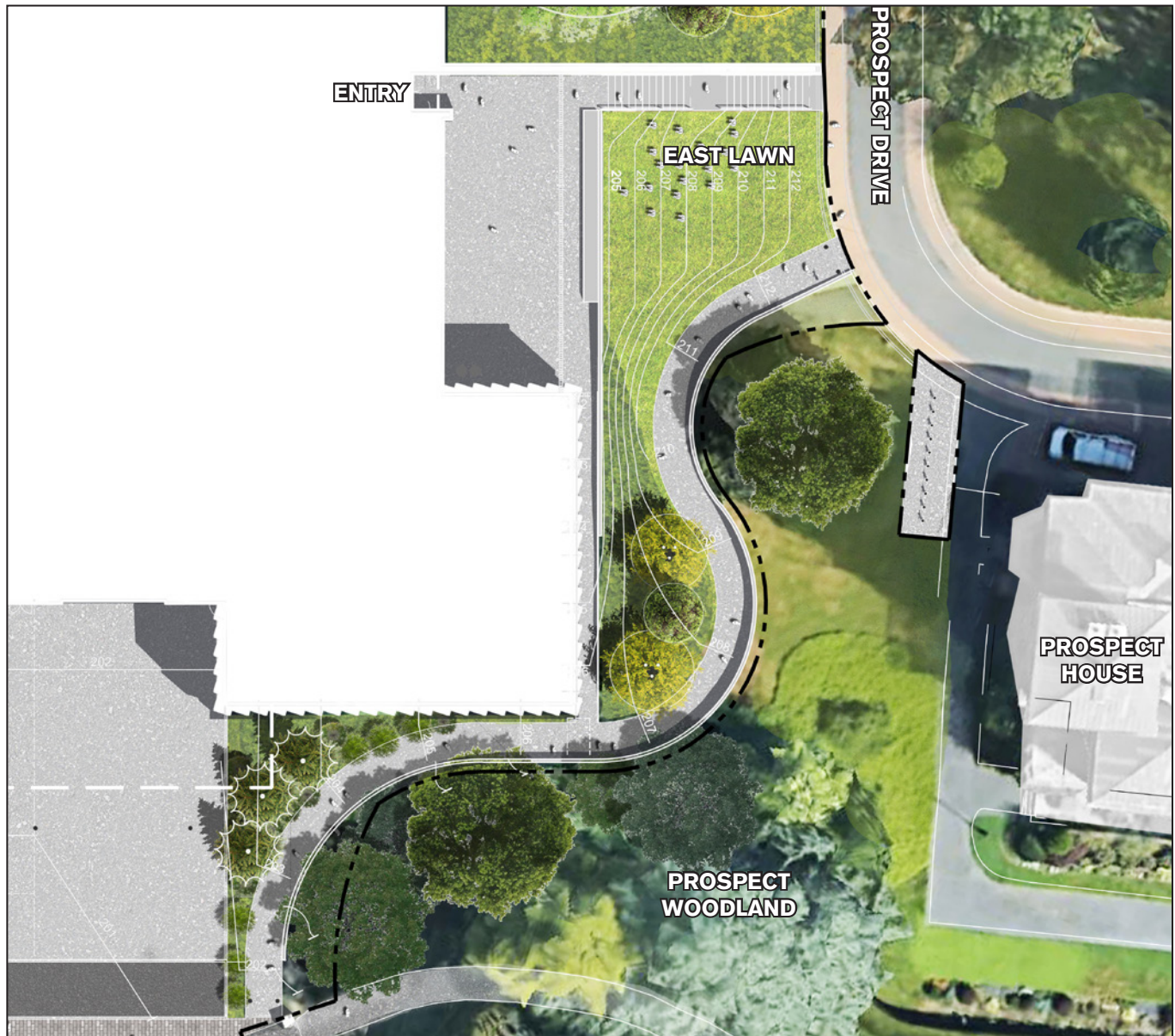


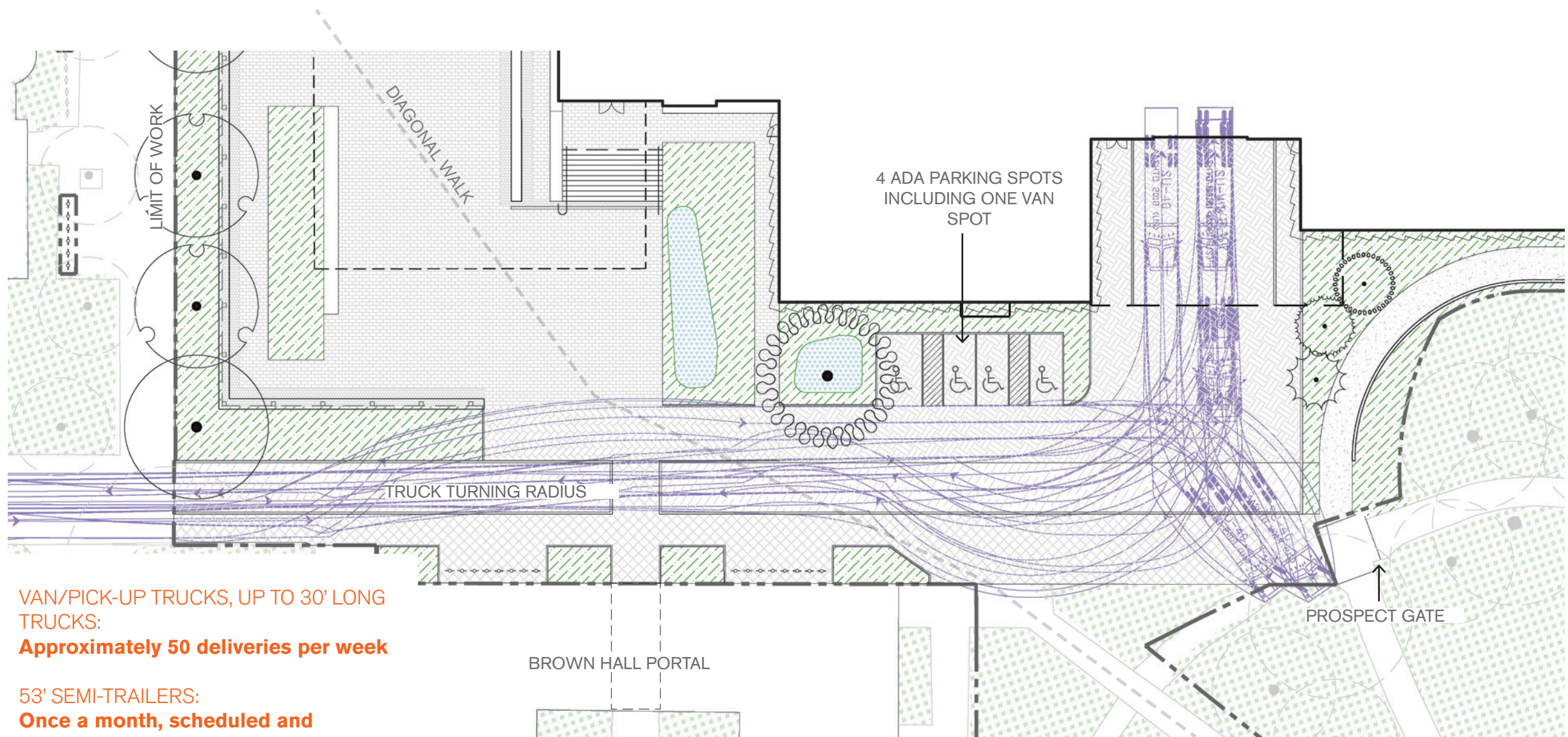
03. Dawn Redwood



04. Prospect House Gate

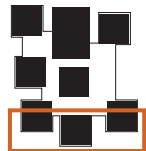


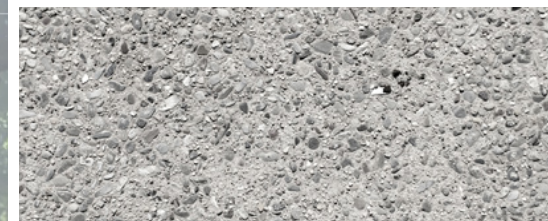
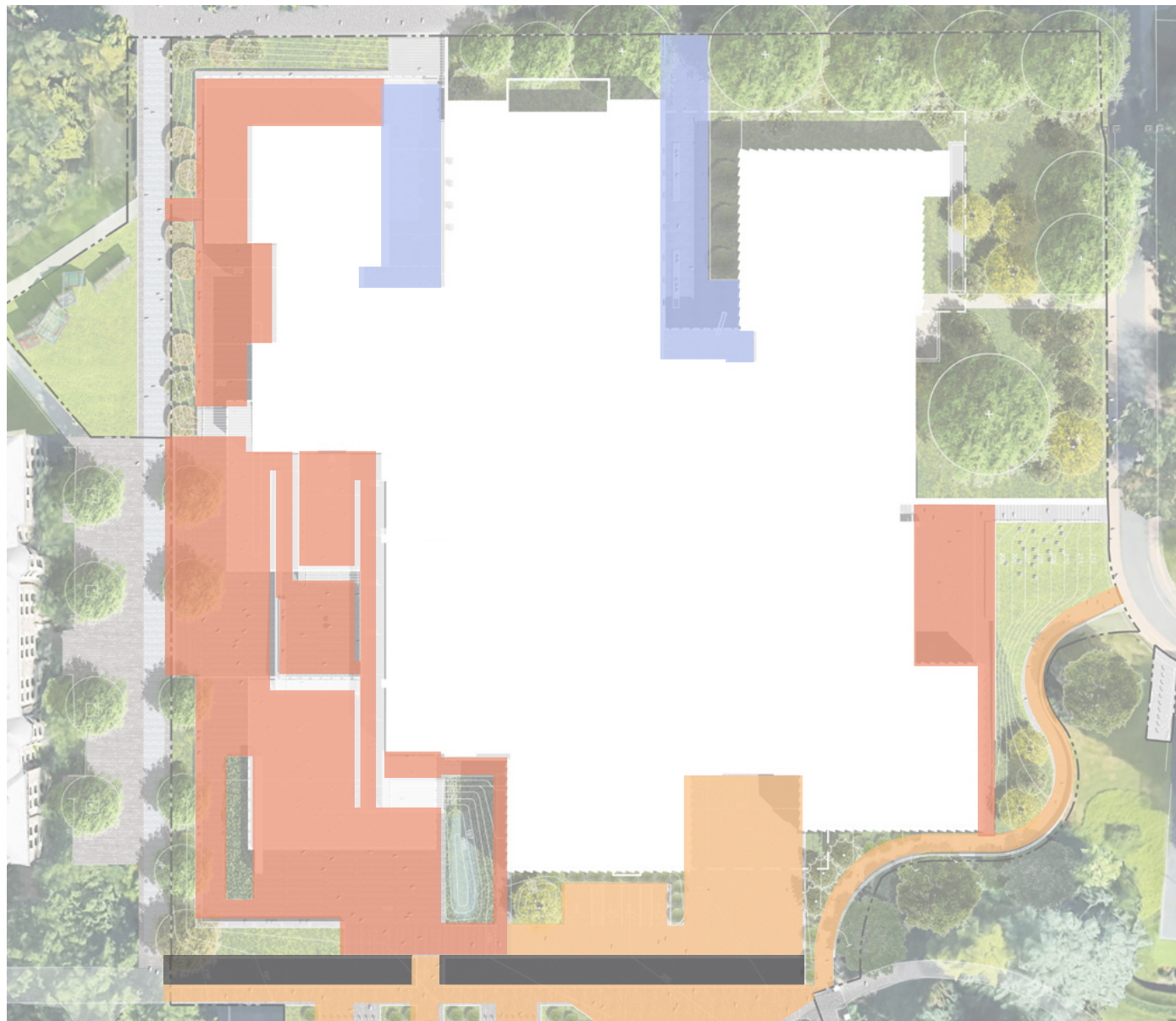




VAN/PICK-UP TRUCKS, UP TO 30' LONG
TRUCKS:
Approximately 50 deliveries per week

53' SEMI-TRAILERS:
**Once a month, scheduled and
coordinated with museum staff**

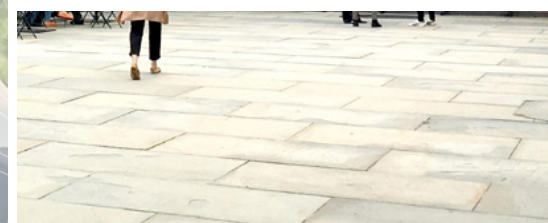




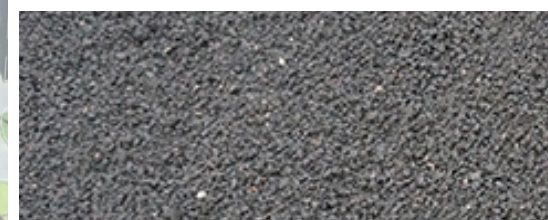
Exposed Aggregate Concrete



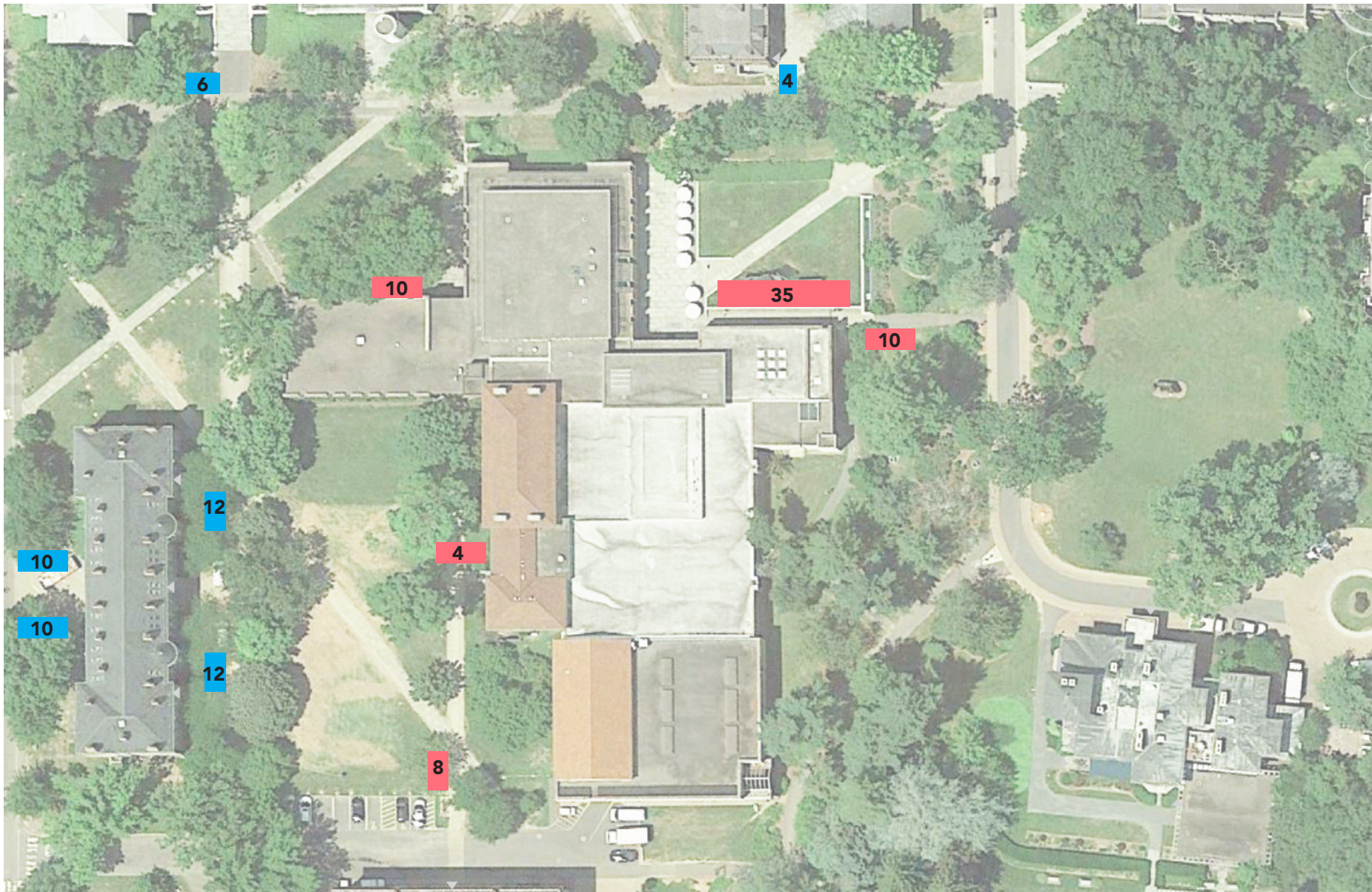
Concrete Pavers



Bluestone

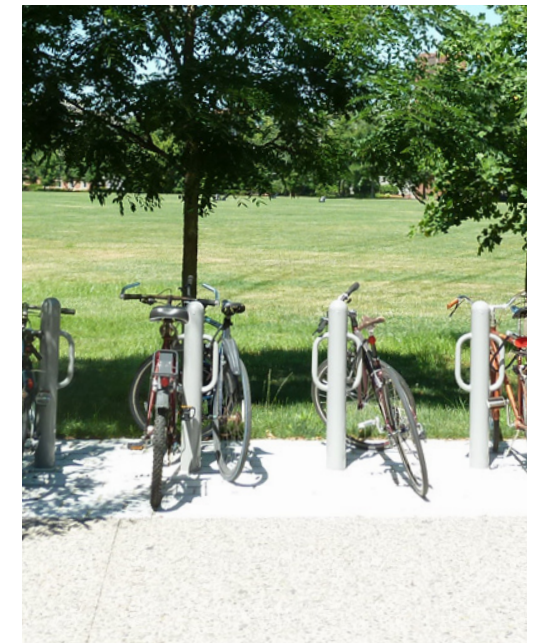
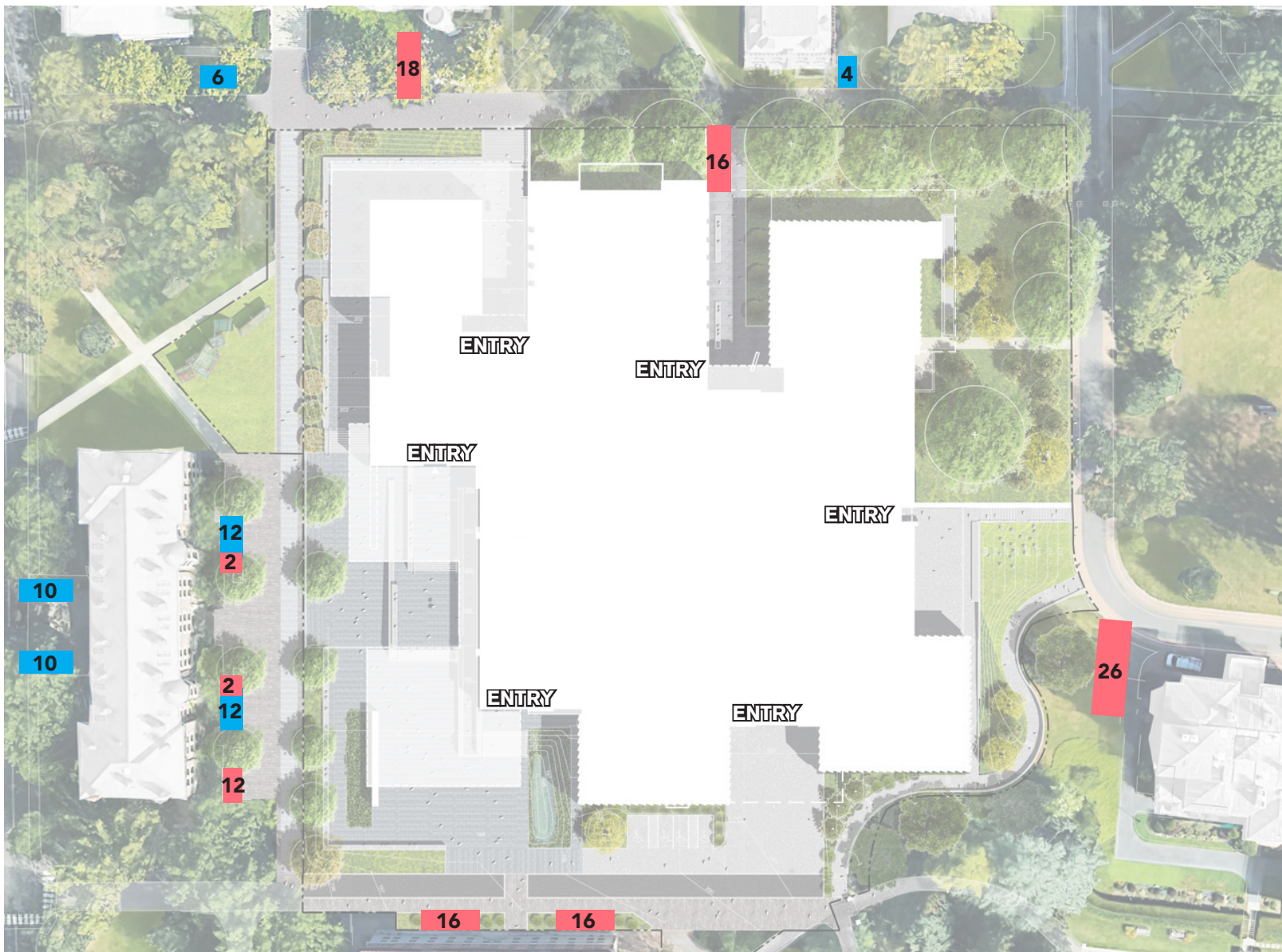


Asphalt



**EXISTING ON -SITE: 67
BIKE PARKING SPOTS
ON SITE**

**EXISTING OFF-SITE BIKE
PARKING TO REMAIN**



EXISTING: 67 BIKE
PARKING SPOTS ON
SITE

**PROPOSED: 108 BIKE
PARKING SPOTS ON
SITE**

**EXISTING OFF-SITE BIKE
PARKING TO REMAIN**

SITE PLAN SUBMISSION TREE REPLACEMENTS:

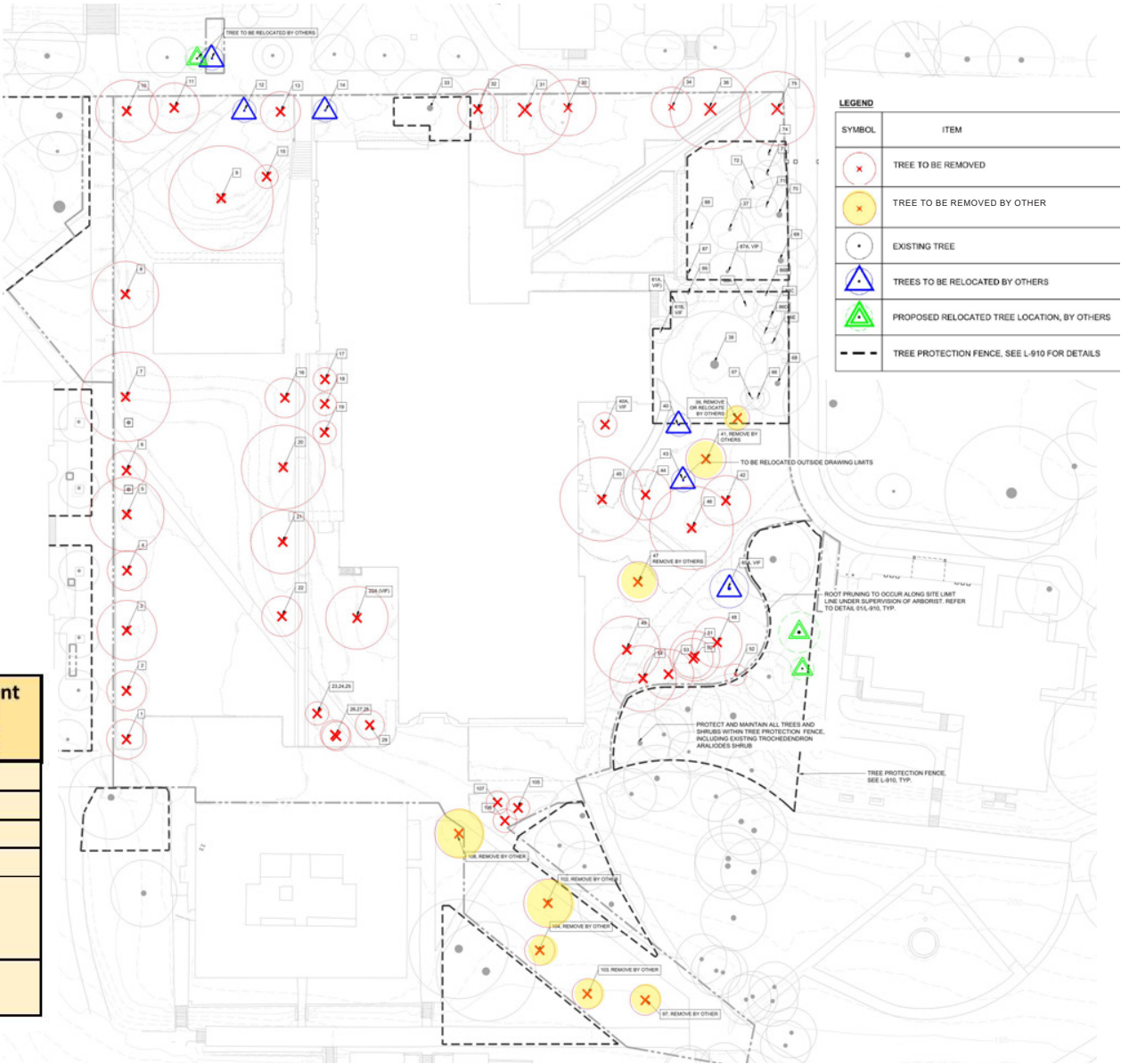
60	REPLACEMENT TREES REQUIRED
25	ON SITE TREES TO BE PLANTED
35	OFF SITE TREES TO BE PLANTED

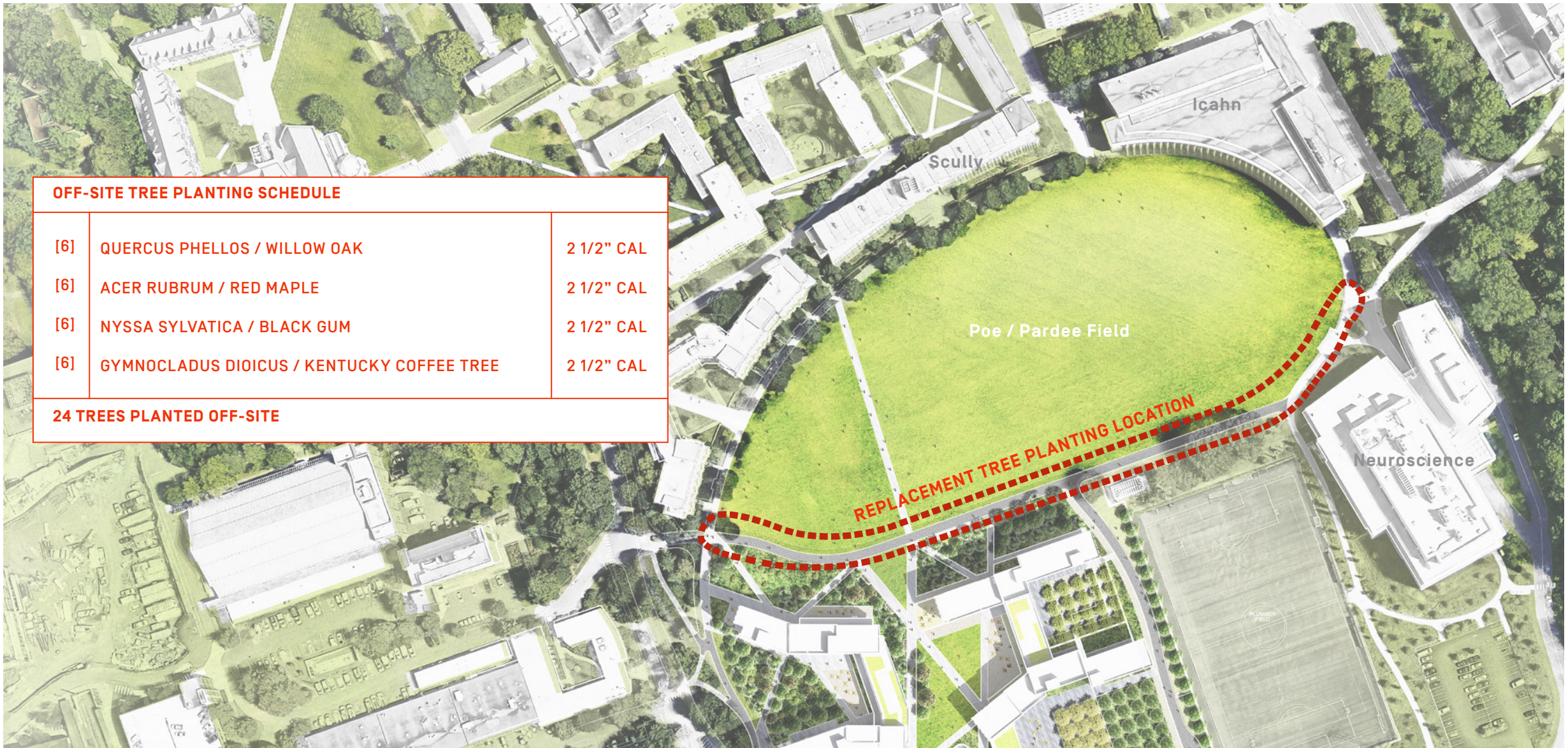
CURRENT TREE REPLACEMENTS:

63	REPLACEMENT TREES REQUIRED (+3)
39	ON SITE TREES TO BE PLANTED (+14)
24	OFF SITE TREES TO BE PLANTED (-11)

CURRENT TREE REPLACEMENT SCHEDULE

Live Regulated Tree(s) Removed/Destroyed	Quantity of Removals	Required Replacement Tree	Replacement Trees	Tree Replacement Fee in Lieu of Replacement
DBH of 8" to 16.99"	11	x One (1) =	11	\$ 400.00
DBH of 17" to 30.99"	15	x Two (2) =	30	\$ 800.00
DBH of 31" to 38.99"	3	x Three (3) =	9	\$1,200.00
DBH of 39" or Greater	3	x Four (4) =	12	\$1,600.00
Ash Tree	2	Goal Replacement: 10% of total with Minimum of One (1)	1	
Total Replacements:				63





OFF-SITE TREE PLANTING SCHEDULE

[6]	QUERCUS PHELLOS / WILLOW OAK	2 1/2" CAL
[6]	ACER RUBRUM / RED MAPLE	2 1/2" CAL
[6]	NYSSA SYLVATICA / BLACK GUM	2 1/2" CAL
[6]	GYMNOCLADUS DIOICUS / KENTUCKY COFFEE TREE	2 1/2" CAL

24 TREES PLANTED OFF-SITE

[7] *CRATAEGUS VIRIDIS*
GREEN HAWTHORNE

[5] *GLEDISTIA TRIACANTHOS*
HONEY LOCUST

[1] *TAXODIUM DISTICHUM*
BALD CYPRESS

[1] *QUERCUS BICOLOR*
SWAMP WHITE OAK

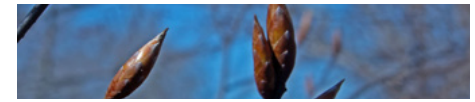
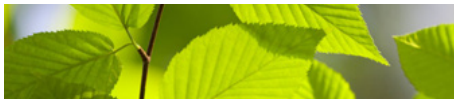
[6] *FAGUS GRANDIFOLIA*
AMERICAN BEECH
[2] *QUERCUS BICOLOR*
SWAMP WHITE OAK

[4] *AMELANCHIER CANADENSIS*
SERVICEBERRY
[3] *CERCIS CANADENSIS*
RED BUD
[2] *HAMAMELIS VIRGINIANA*
WITCH HAZEL
[2] *HAMAMELIS X INTERMEDIA*
YELLOW WITCH HAZEL

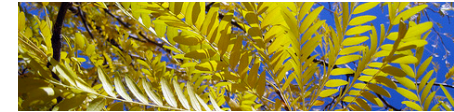
[3] *ACER PALMATUM*
JAPANESE MAPLES,
VARIOUS CULTIVARS

[2] *ILEX OPACA*
AMERICAN HOLLY
[1] *PINUS FLEXILIS*
LIMBER PINE

Fagus grandifolia
American Beech



Gledistia triacanthos
Honey Locust



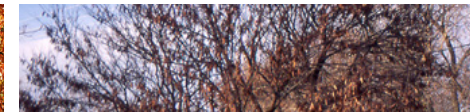
Quercus bicolor
Swamp White Oak



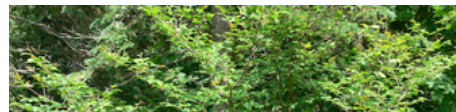
Taxodium distichum
Bald Cypress



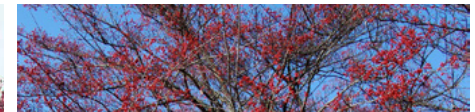
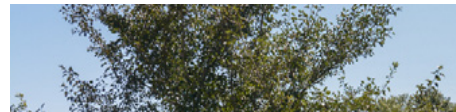
Cercis canadensis
Eastern Redbud



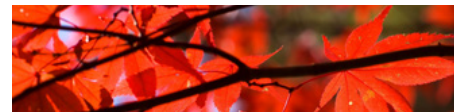
Hamamelis Virginiana
Witchhazel



Crataegus viridis
Hawthorne



Acer palmatum
Japanese Maple



Ilex opaca
American Holly



Pinus flexilis
Limber Pine





Astilbe



Lilyturf



Lenten Rose



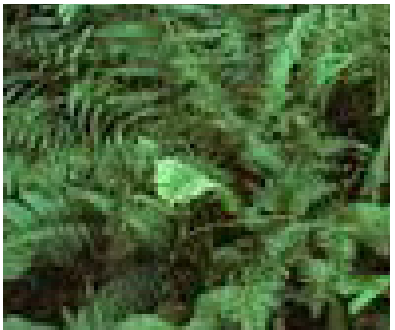
Pachysandra



Bugleweed



Allium



Christmas Fern



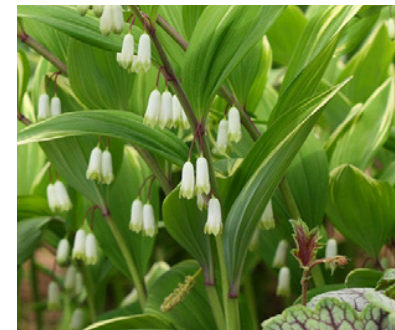
Ostrich Fern



Hay-scented Fern



Coral Bells



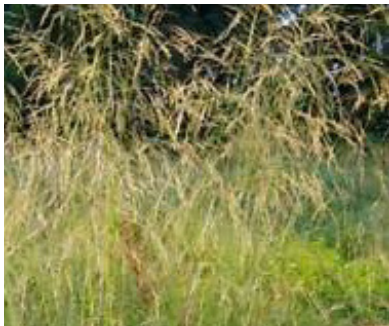
Solomon's Seal



Daffodil



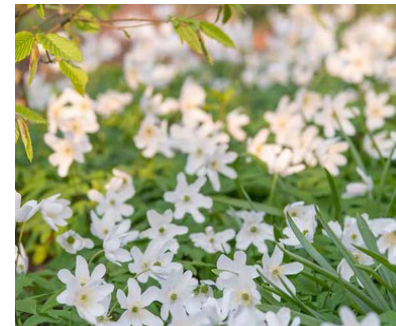
Switchgrass



Tufted Hair Grass



Foam Flower



Anemones

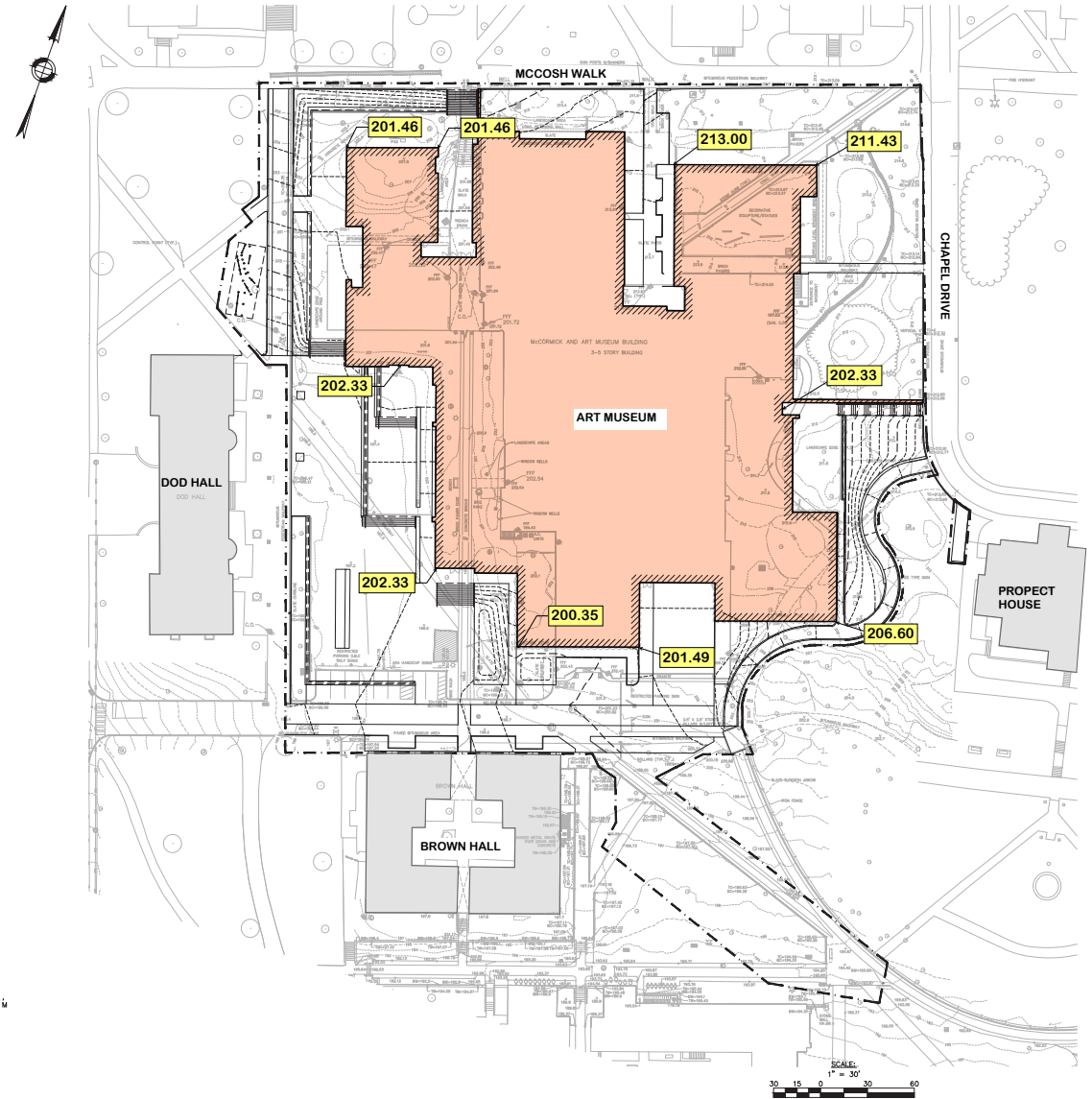


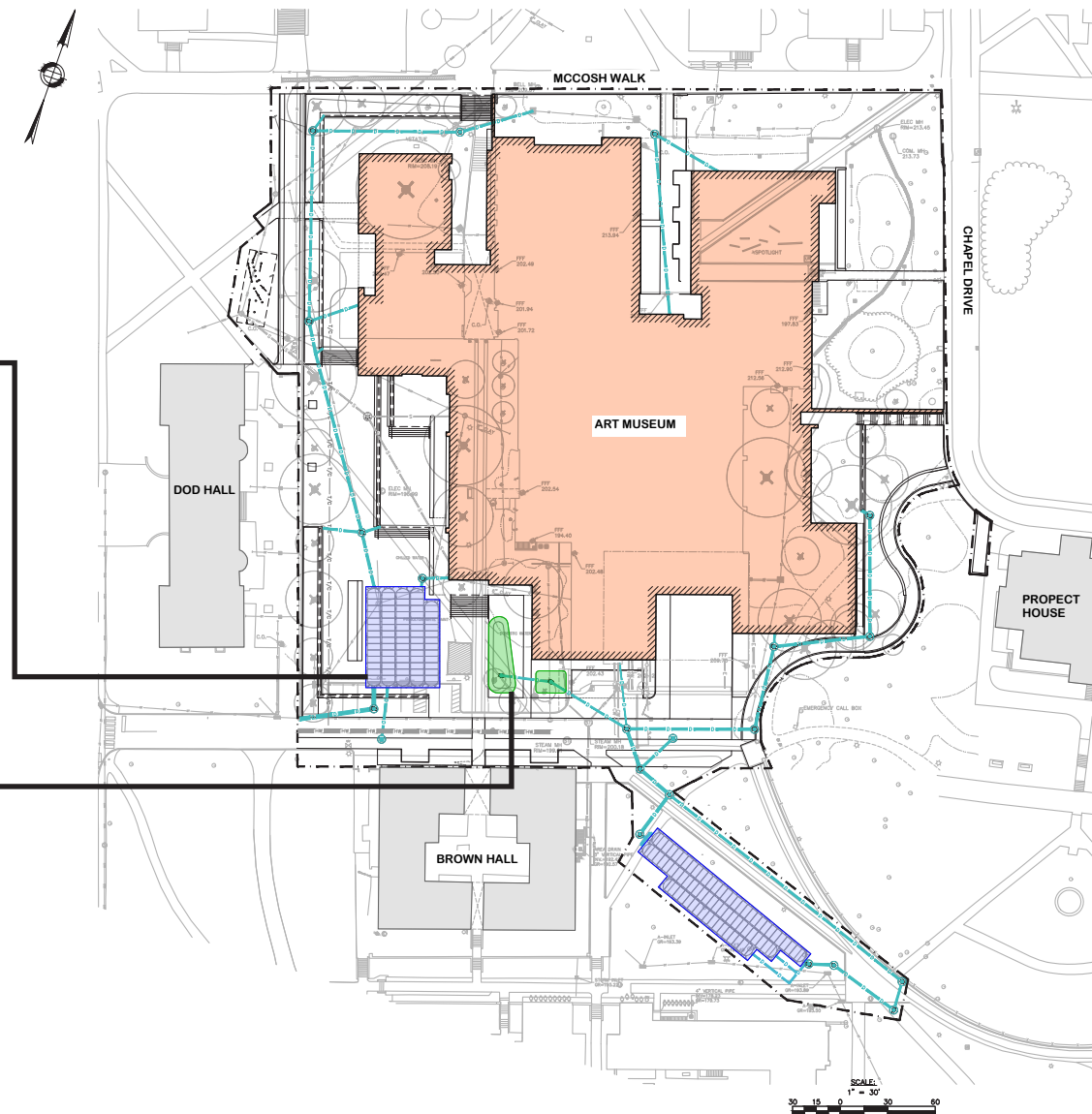
Virginia Bluebells



*English Ivy **

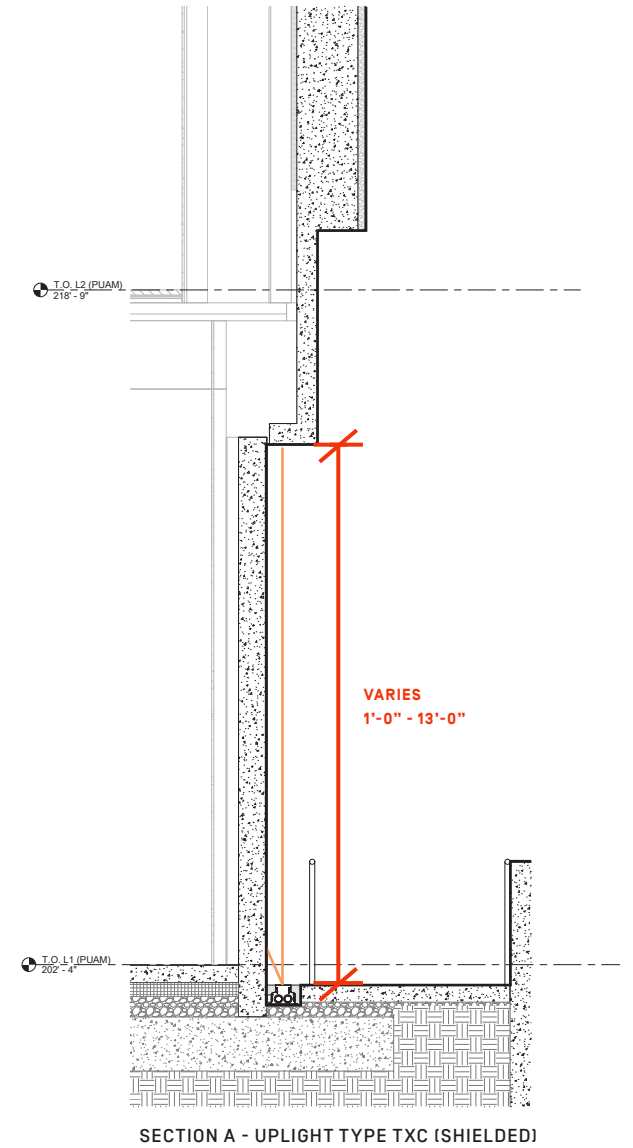
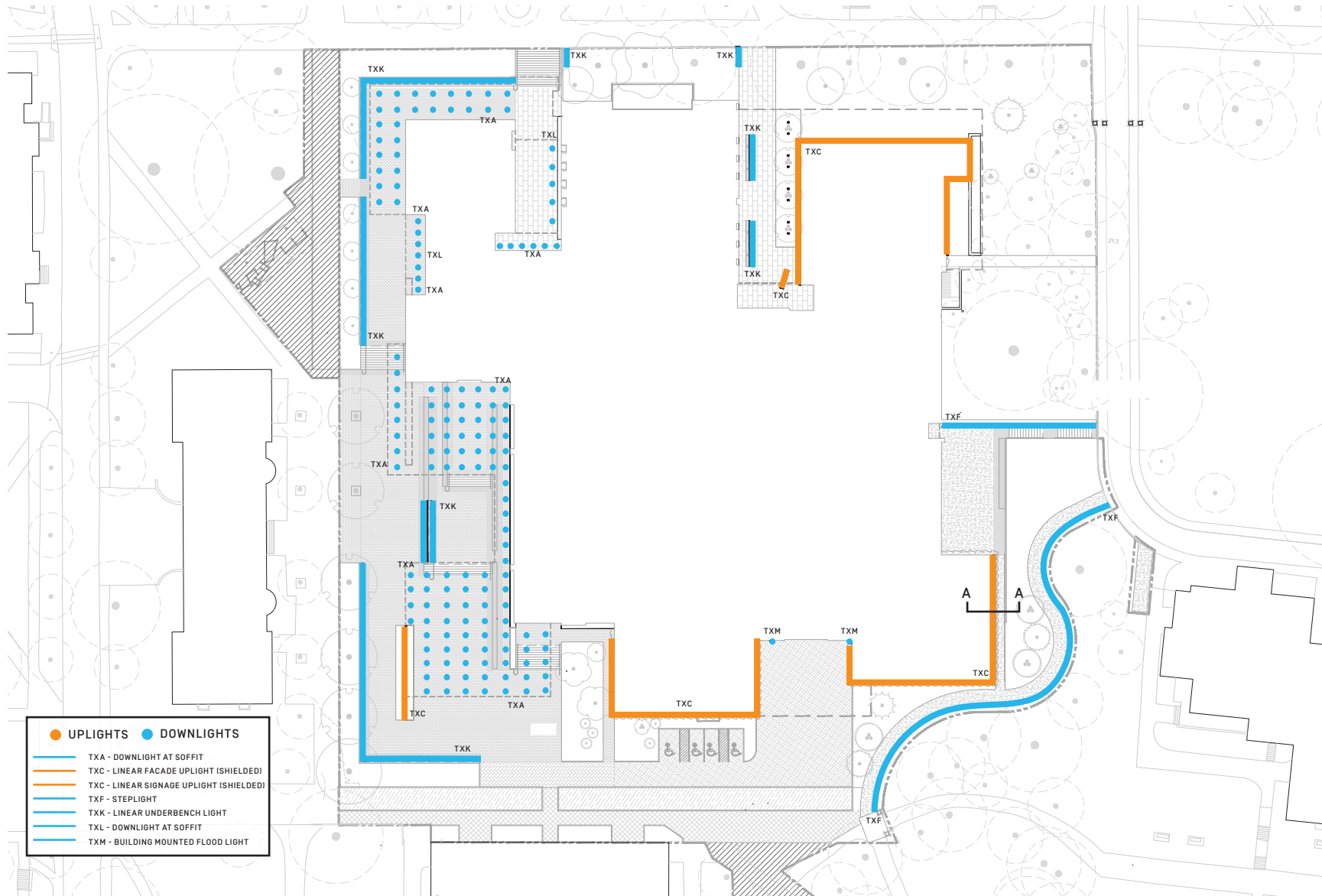
** English Ivy to be used as a vine in covered and contained planters at north entrance only*

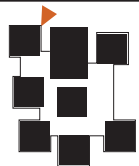


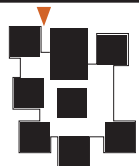


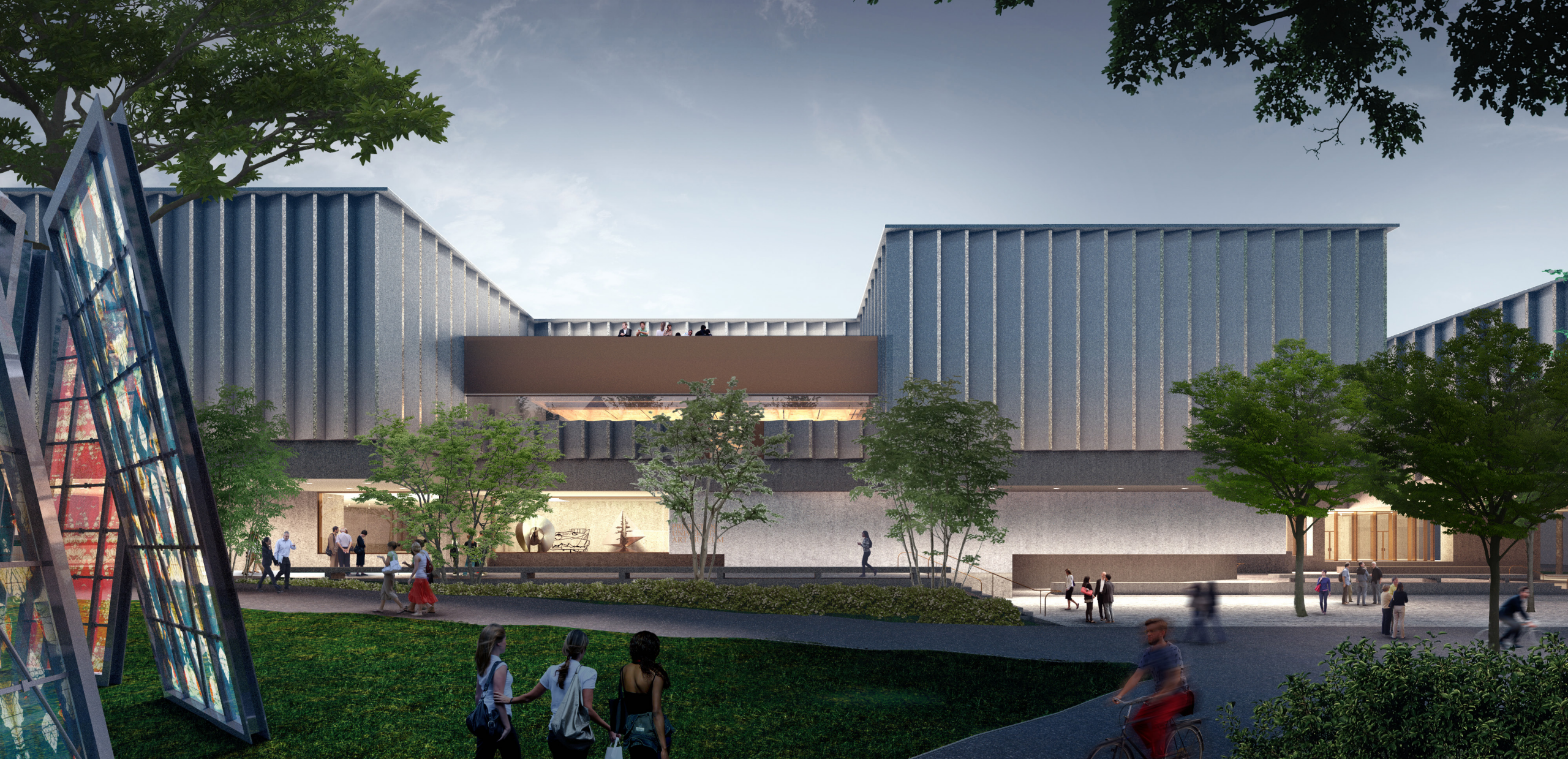


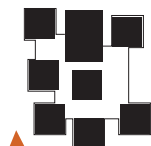
EXTERIOR CHARACTER AND MATERIAL

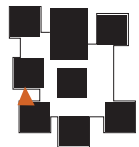














Exterior Signage Location Diagram

Building ID

Size: 38.2 SF
33'-10" x 1'-1 5/8"
Letter cap height is 1'-1 5/8"

Height: 15'-2" from T.O. Level 1 to T.O. sign

Materiality: Etched and paint-filled with grey or bronze color into precast concrete facade. Externally illuminated by others.

Programming Banner

Size: 41.8 SF
3'-9" x 11'-1 3/4"

Materiality: Digitally printed exterior grade vinyl applied to metal panel inset flush into CIP concrete facade showing changeable exhibition and branding content (static typography, graphic, and/or photography). Externally illuminated by others.

Building ID

Size: 29.8 SF
14'-7 1/2" x 2'-1/2"
Letter cap height is 9"

Height: 11'-0" from T.O. Level 1 to T.O. sign

Materiality: Etched and paint-filled with grey or bronze color into CIP concrete facade. Externally illuminated by others.

Building ID

Size: 29.8 SF
14'-7 1/2" x 2'-1/2"
Letter cap height is 9"

Height: 11'-0" from T.O. Level 1 to T.O. sign

Materiality: Etched and paint-filled with grey or bronze color into CIP concrete facade. Externally illuminated by others.

Programming Banner (2-sided)

Size: 138 SF on each side (276 SF total)
6'-0" x 23'-0"

Materiality: Digitally printed exterior grade vinyl applied to front and back surfaces of CIP concrete plinth showing changeable exhibition and branding content (static typography, graphic, and/or photography). Externally illuminated by others.

Library Building ID (2-sided)

Size: 9.34 SF on each side (18.7 SF total)
7'-7 1/4" x 1'-2 3/4" on each side
Letter cap height is 5 3/8"
(Calculation does not include overall area of plinth)

Height: 2'-9" from grade to T.O. sign

Materiality: Etched and paint-filled with grey or bronze color into CIP concrete plinth. Externally illuminated by others.

Library Building ID

Size: 13.13 SF
9'-0" x 1'-5"
Letter cap height is 6 3/8"
(Calculation does not include overall area of plinth)

Height: 8'-0" from T.O. Library Level 1 to T.O. sign

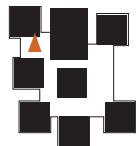
Materiality: Etched and paint-filled with grey or bronze color into CIP concrete plinth. Externally illuminated by others.

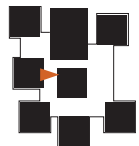
Building ID

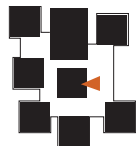
Size: 38.2 SF
33'-10" x 1'-1 5/8"
Letter cap height is 1'-1 5/8"

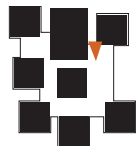
Height: 15'-10" from T.O. Level 1 to T.O. sign

Materiality: Etched and paint-filled with grey or bronze color into precast concrete facade. Externally illuminated by others.



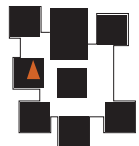






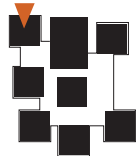


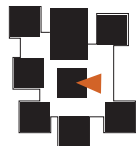
Café
Galleries
Offices

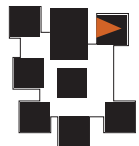


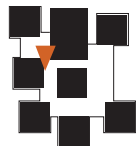
PRINCETON UNIVERSITY
ART MUSEUM
MARCH 4, 2021

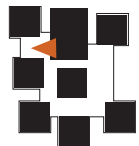
PLANNING BOARD PRESENTATION
GRAND STAIR









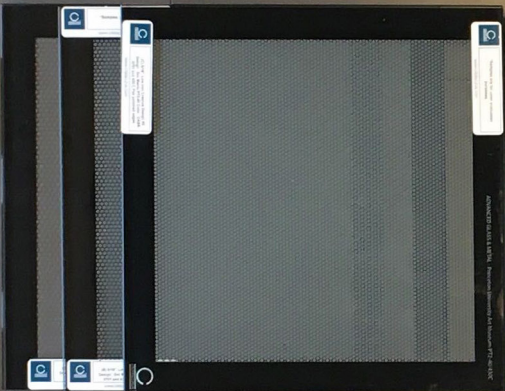


BUILDING MATERIAL

TERRAZZO

METAL

GLASS



CONCRETE PAVERS

GLULAM / WOOD

EXTERIOR WALL MATERIAL



PRECAST AGGREGATE VERSION 1



PRECAST AGGREGATE VERSION 2

1

**REDUCE
GREENHOUSE
GAS EMISSIONS
TO NET ZERO**

- MINIMAL SOUTH FACING GLAZING
- HIGH PERFORMANCE EXTERIOR ENVELOPE
- HIGH PERFORMANCE MECHANICAL SYSTEM
- EFFICIENT LIGHTING AND CONTROLS
- UTILITY MODIFIED FROM STEAM TO HOT WATER
- HEAVY TIMBER CARBON OFFSET

2

**REDUCE WATER
USAGE**

- NO PERMANENT IRRIGATION

3

**INCREASE
AREA UNDER
ENHANCED
STORMWATER
MANAGEMENT**

- MEET CAMPUS GOALS AND REGULATORY REQUIREMENTS ON CENTRAL CAMPUS

4

**DESIGN AND
DEVELOP
RESPONSIBLY**

- ACTIVE ENGINEERING AND CONSTRUCTION MANAGER PARTICIPATION EARLY IN DESIGN

5

**CULTIVATE
HEALTHY AND
RESILIENT
HABITATS**

- INTEGRATE EXISTING PROSPECT WOODLANDS

6

**USE
ALTERNATIVES
TO SINGLE-
OCCUPANCY
VEHICLES**

- REINFORCE CAMPUS PEDESTRIAN AND BICYCLE PATHS

7

**REDUCE WASTE
AND EXPAND
SUSTAINABLE
PURCHASING**

- RECYCLE SOILS FROM CONSTRUCTION SITE
- FOOD SERVICE AND RECYCLING PER CAMPUS BEST PRACTICES
- DIVERT CONSTRUCTION AND DEMOLITION DEBRIS FROM LANDFILL

