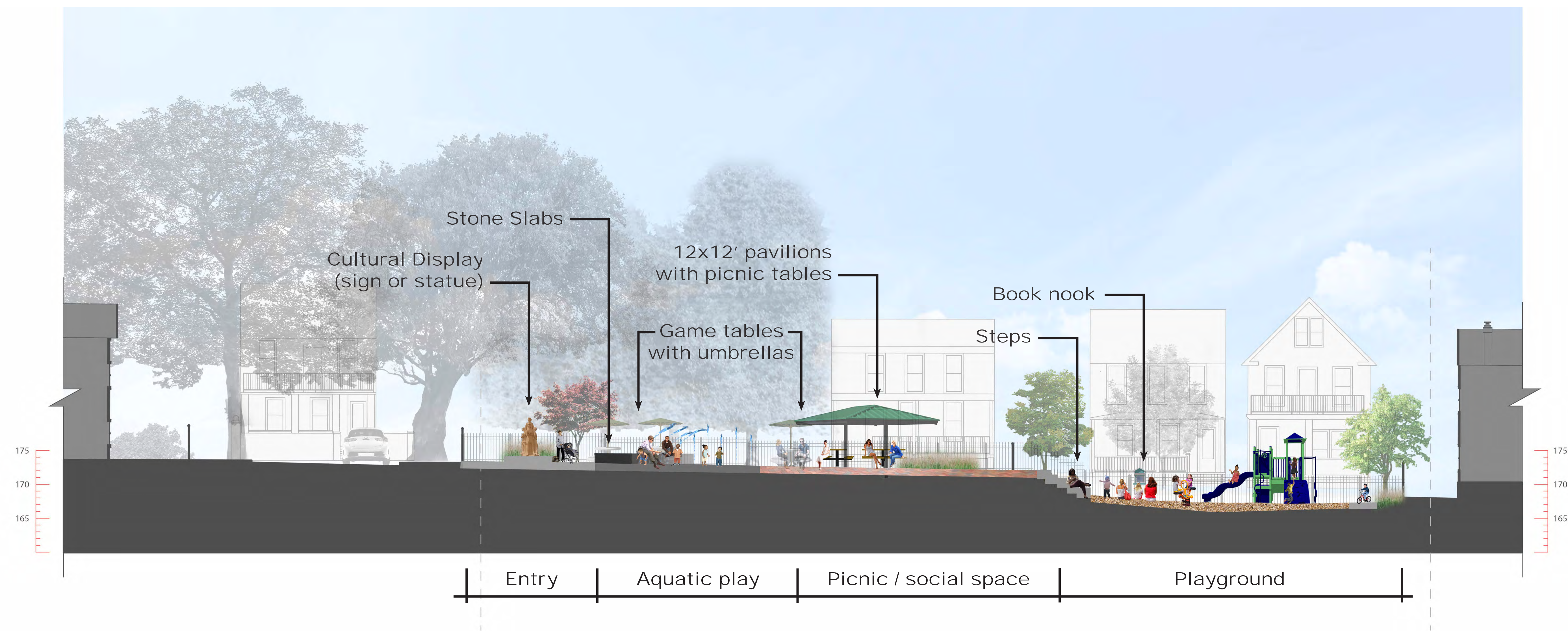




# Mary Moss Playground Design Concept A

Corner of John and Lytle Streets, Princeton, NJ  
Block 15.02, Lots 36-38 & 72



## Summary

Concept A divides the site into an upper and a lower terrace. The upper terrace serves as the aquatic play area and the lower terrace serves as the playground. The aquatic play area is surrounded by a multitude of seating opportunities, including game tables with umbrellas to the east, three picnic pavilions with tables to the north, and freestanding deck area with lounge seating to the west. These seating opportunities provide a place where parents can relax while children are engaged in aquatic play. They also contribute to an active plaza feel for the upper terrace when the aquatic play area is not in use or is out of season.

The lower terrace is envisioned as the location for the playground area. The lower terrace is accessed via an entrance from John Street, a stairway from the upper terrace, or an accessible pathway that surrounds the entire playground and connects all

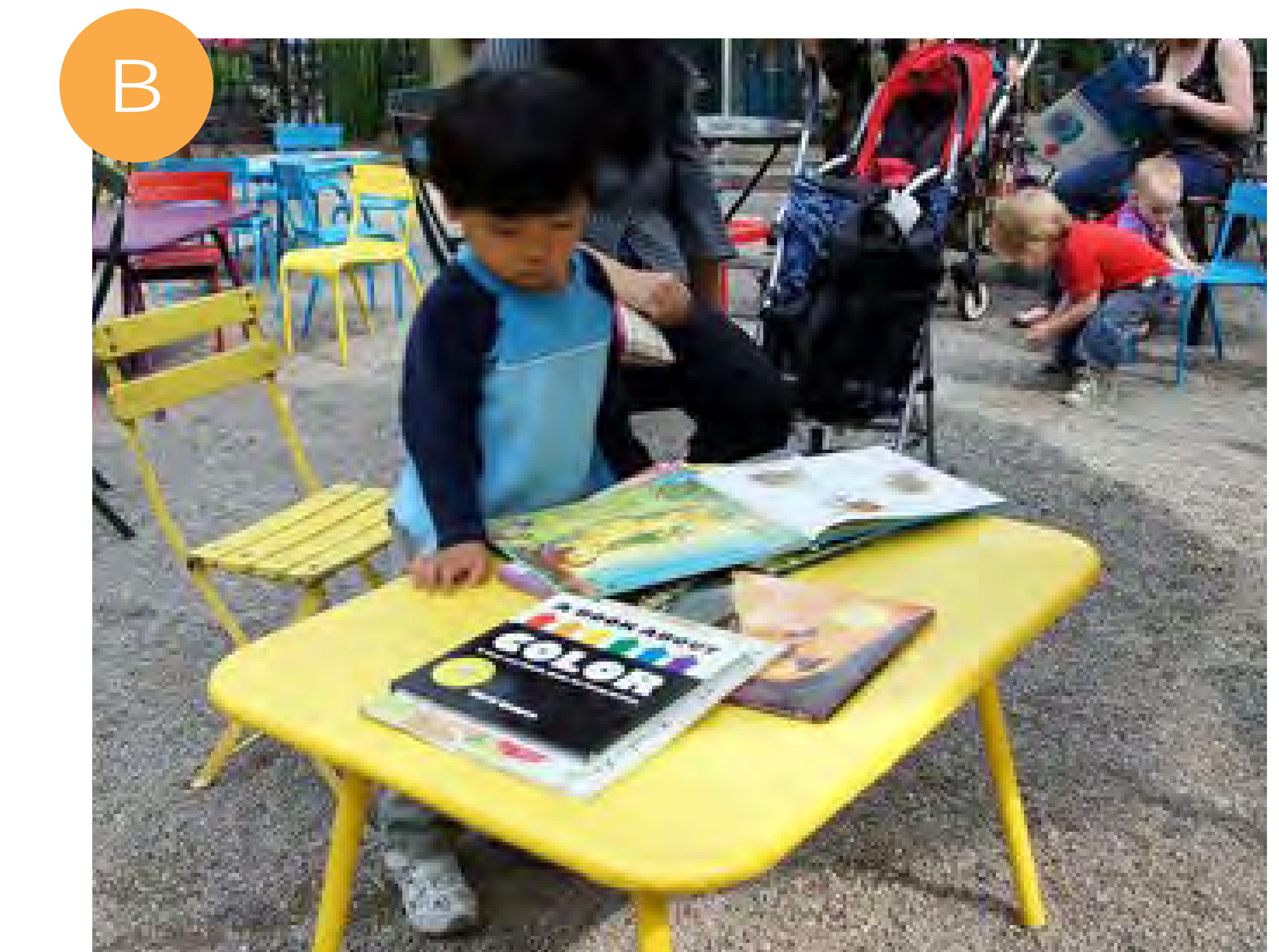
the way to the Lytle Street entrance. In addition to playground apparatus, the lower terrace has space for a book nook complete with movable seating for readers. Curvilinear bench seating is provided along the edges of the space.

Concept A has two entrances, both in proximity to the existing entry locations. From Lytle Street, one enters the playground and encounters a cultural cue of some type, perhaps signage or a statue. Along the perimeter, the existing wall along John Street is replaced (to minimize site excavation) and a new perimeter fence (4' ht.) is installed immediately behind the wall. A landscape buffer is introduced along John and Lytle Streets to provide a sense of enclosure and add more plant life to the site. A taller fence (6' ht.) is provided along the north and east residential property boundaries.

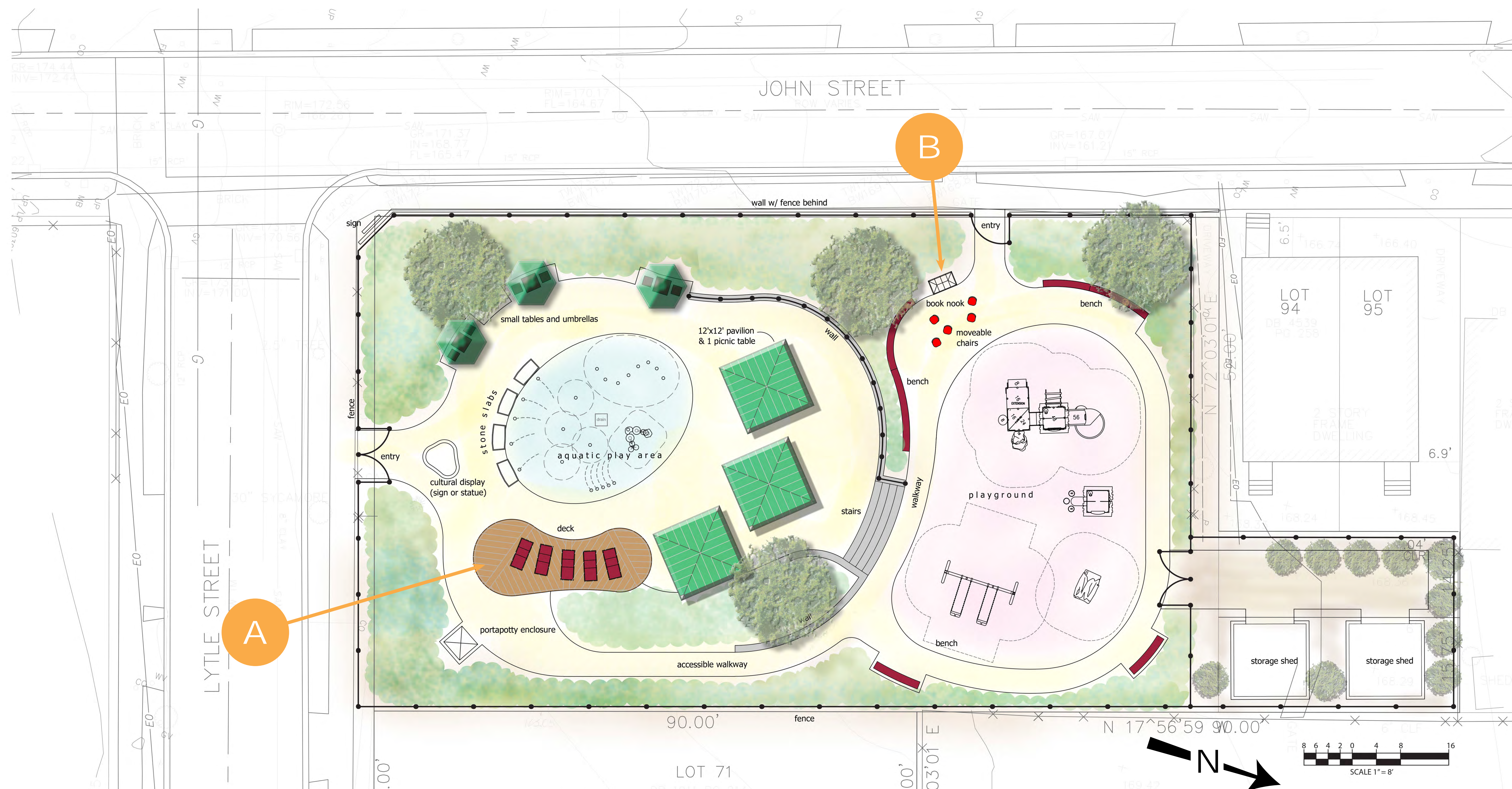
## Inspirations



Lounge chairs provide a relaxing perch from which parents can keep an eye on the children playing in the aquatic area.



The book nook is an outdoor reading space for children with tables, chairs, and a book exchange.

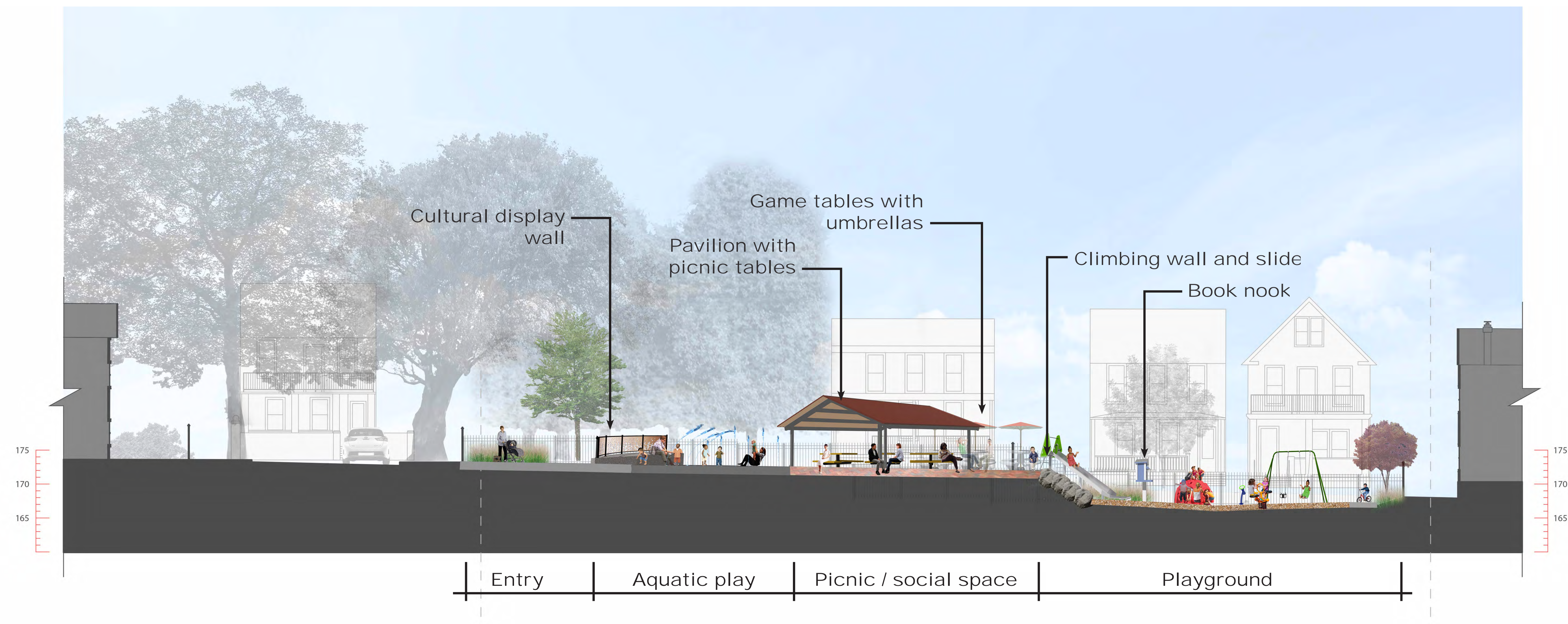




B

# Mary Moss Playground Design Concept B

Corner of John and Lytle Streets, Princeton, NJ  
Block 15.02, Lots 36-38 & 72



## Summary

Concept B divides the playground property into upper and lower terraces. The upper terrace includes the aquatic play area and a mix of seating opportunities. A series of small tables and umbrellas (or game tables) provides a welcoming seating arrangement that is shaded and convenient to the aquatic play area. This arrangement provides seating while also allowing more 'open space' within the upper terrace for events and/or free play. Additionally, a more traditional pavilion has been included to lower costs for the project.

Within the playground, a combination slide and natural boulder climber is incorporated into the existing terrace taking advantage of the grade change. Accessibility to the slide area is provided from the upper terrace area. This play concept reinforces the 'natural play' theme. The construction of the boulder climber and slide will be more expensive than standard playground equipment so cost savings in terms of selecting the remaining playground equipment and/or shelter will be important to stay within budget. The steps between the upper and lower terraces

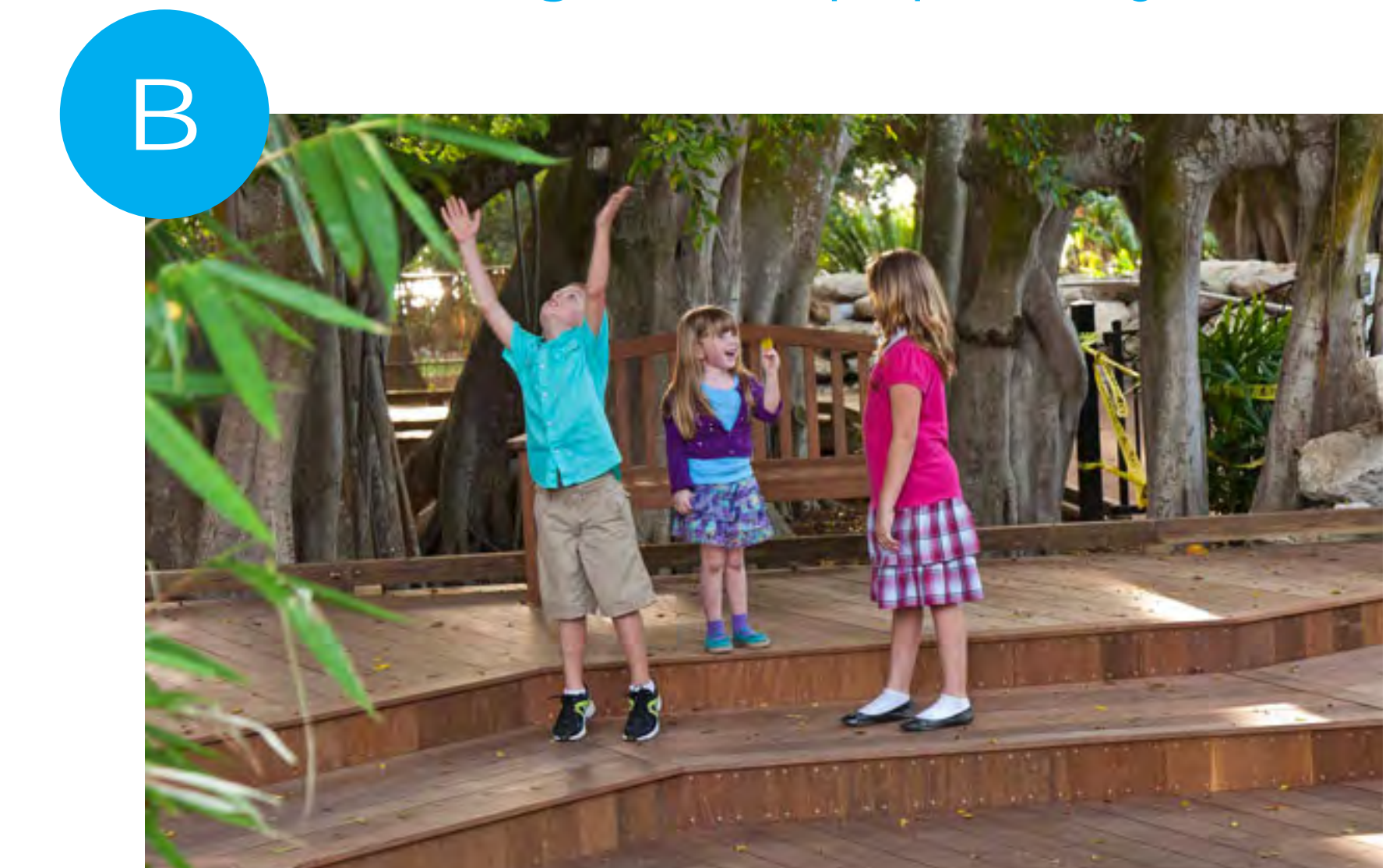
will be designed with a fun, amphitheater-like atmosphere in mind on which children can play or perform.

Concept B adds a third entrance at the corner of John and Lytle Streets. The third entrance contributes to an open, accessible feel and provides immediate access to the aquatic play area. However, a seat-wall within the aquatic area in combination with decorative, laser-cut steel panels mounted on top provides separation from the corner intersection. The decorative metal fence panels are a canvas on which to incorporate an entrance sign and/or cultural, interpretive art for the neighborhood. This concept also introduces a perimeter walkway around the entire park for convenient access around the playground. The existing wall along John Street is rebuilt in place (to minimize site excavation) with a new perimeter fence (4' ht.) installed behind the wall. A perimeter landscape buffer provides a sense of enclosure and adds plant life to the site. Edges on the north and east sides include a taller fence (6' ht.) and compact evergreen plantings.

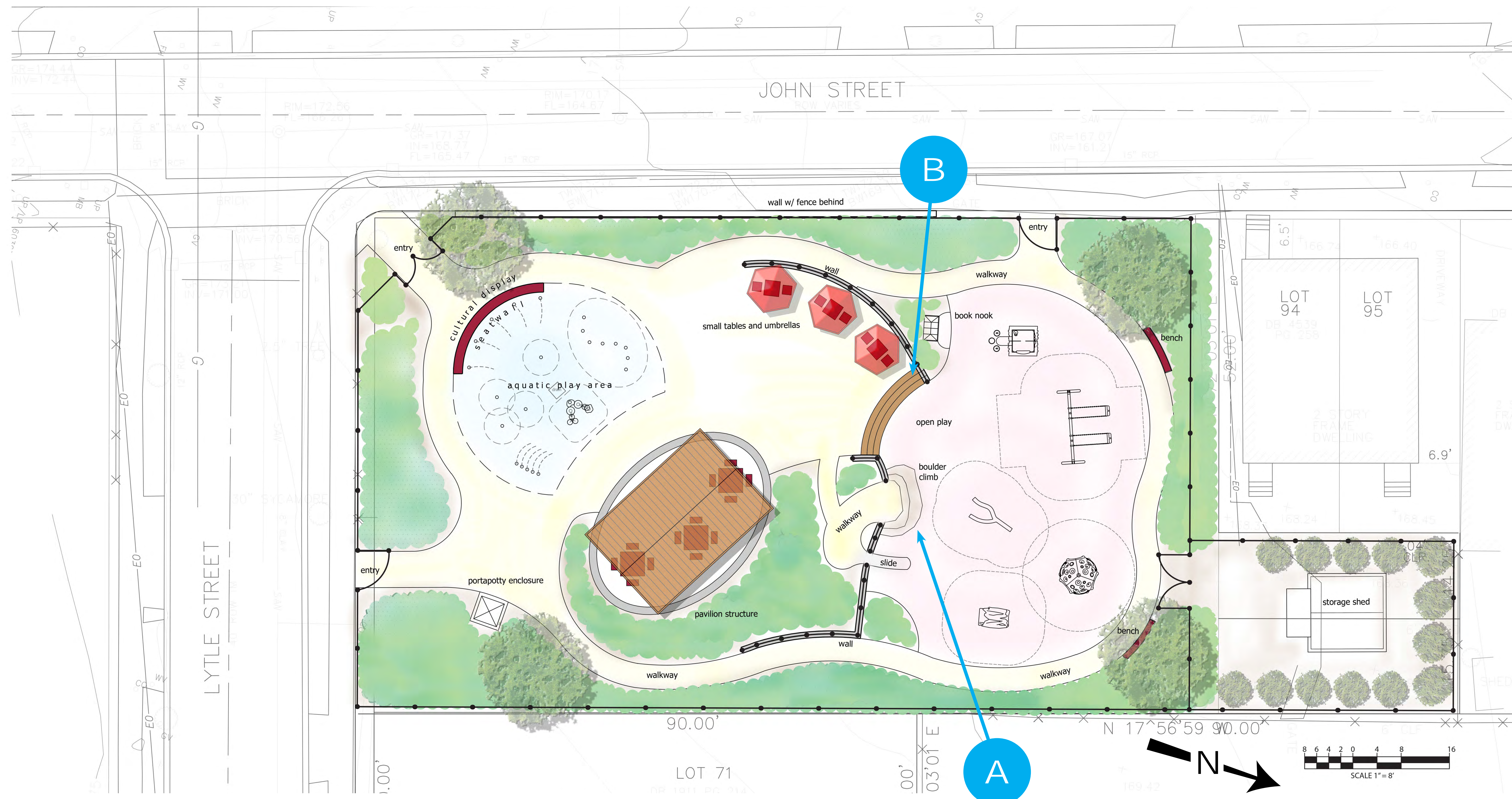
## Inspirations



A custom slide with boulder climber distills the fun of the slide as a playground feature. These have grown in popularity in recent years.



The steps that transition between the upper and lower terraces are an opportunity to create a feature that is engaging and amphitheater-like for children to enjoy.

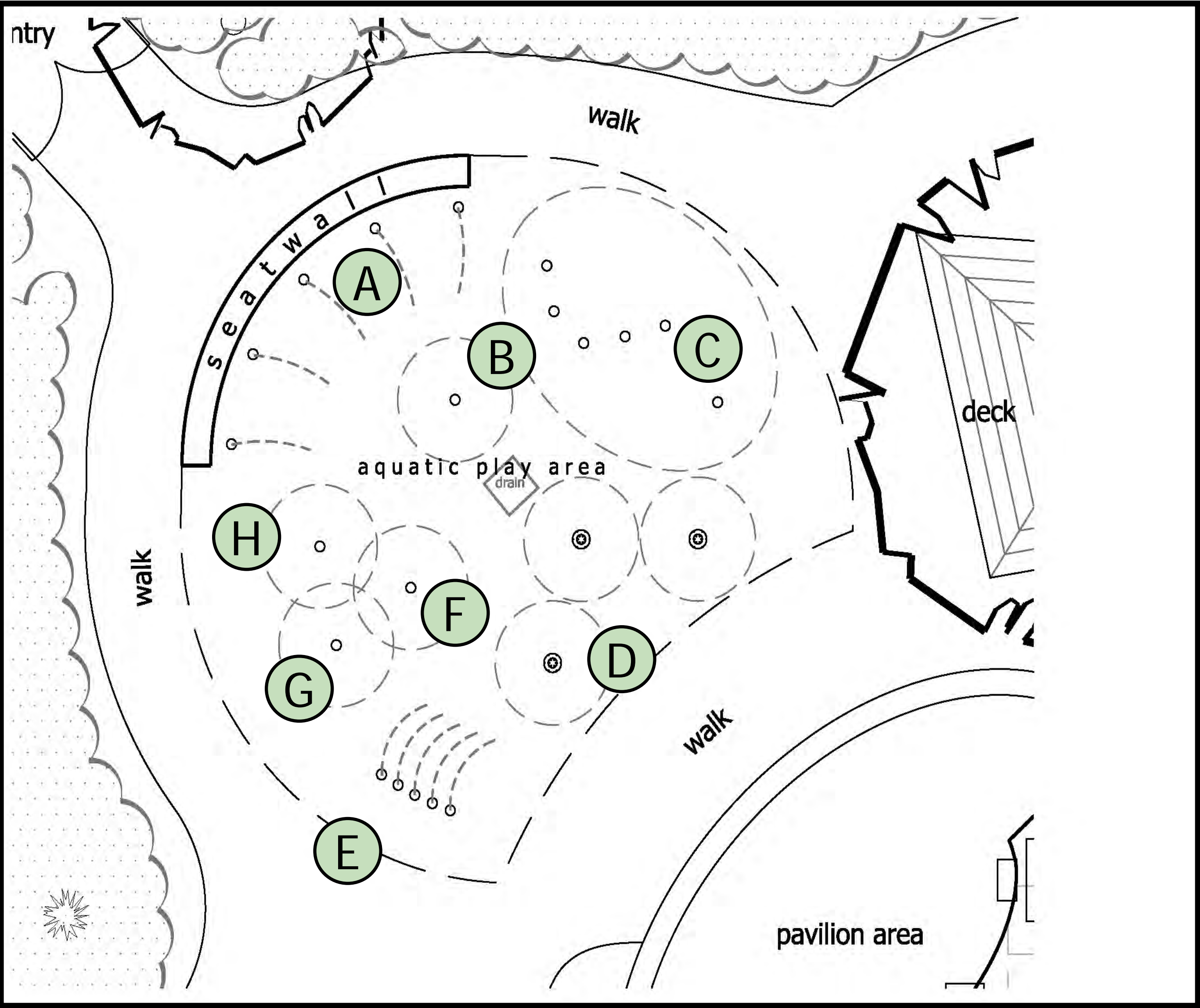




# representative water play equipment

Mary Moss Playground

This graphic displays representative splash pad events in order to provide a sense of scale for the aquatic area in the concept plans.



Aquatic Area Concept Plan



A Arching spray



B Geyser



C Weave spray dancer



D Water misters



E Crawl arch



F Pulsing stream



G Bubbler



H Flowing arch

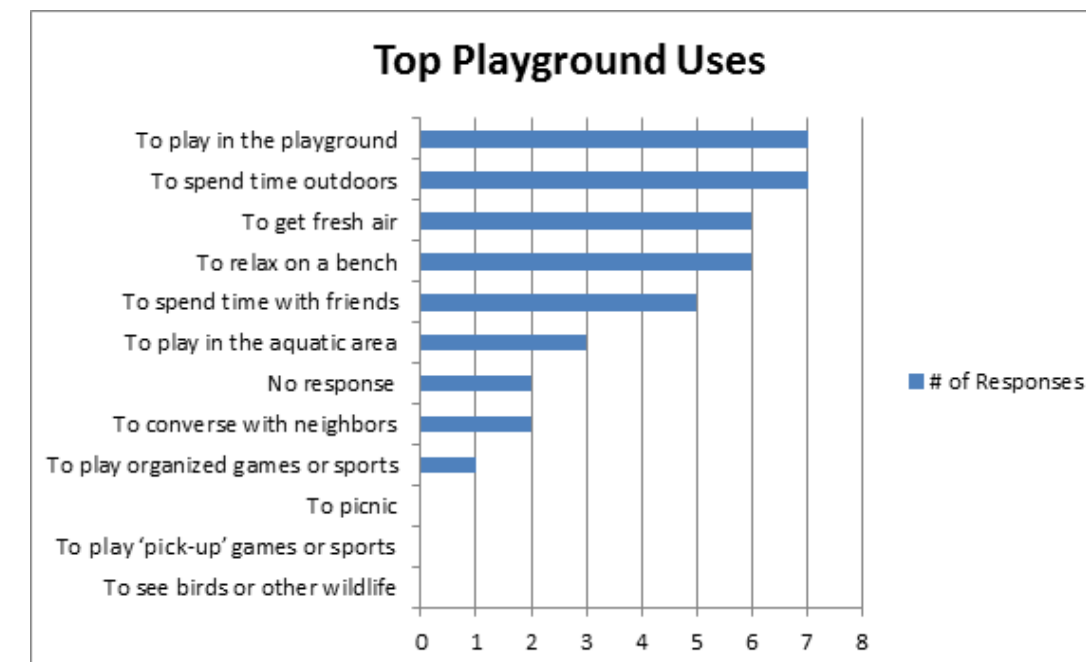


# recap of public input

## Mary Moss Playground

### 'Take-A-Ways' from Meeting #1

#### Top reasons for going to Mary Moss Playground



#### Existing playground 'likes' & 'dislikes' comments...

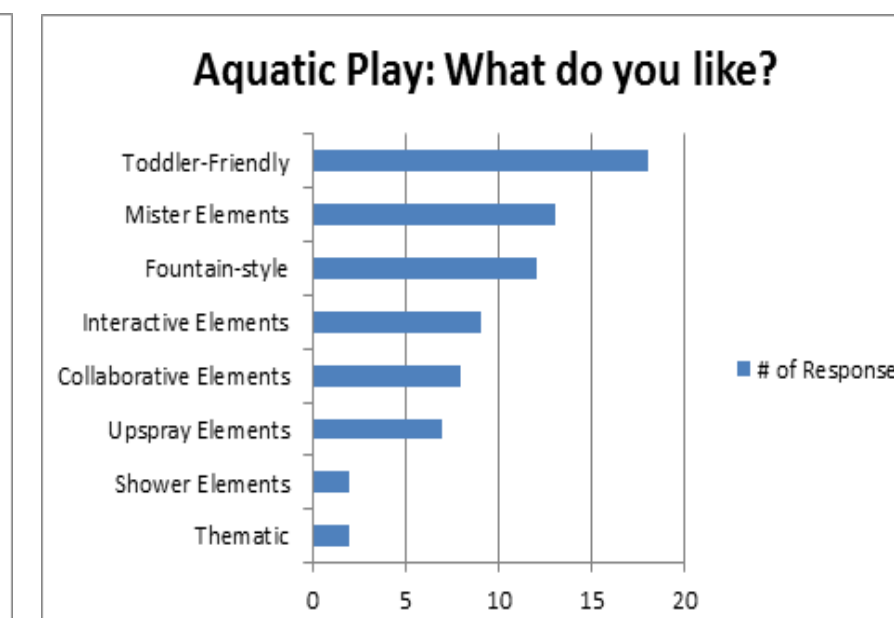
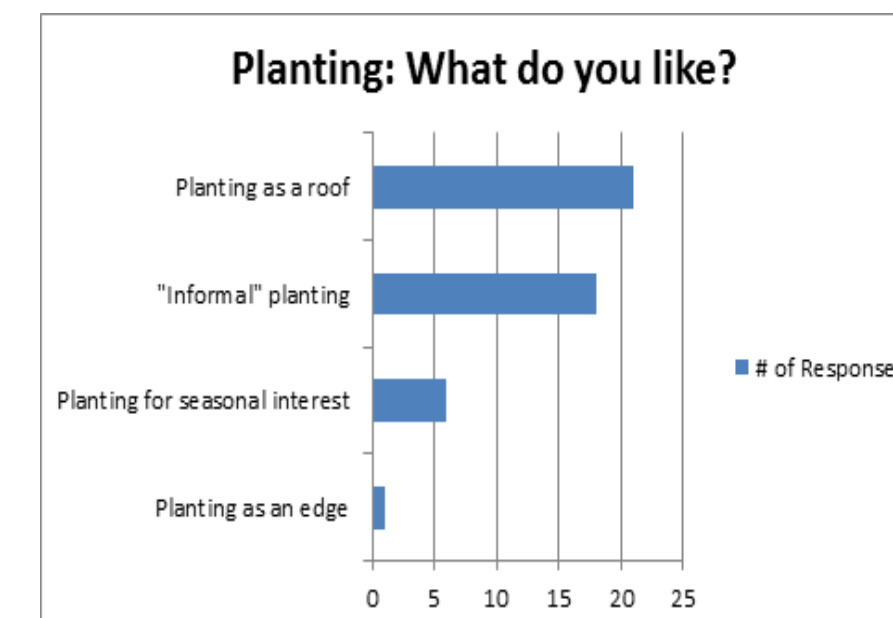
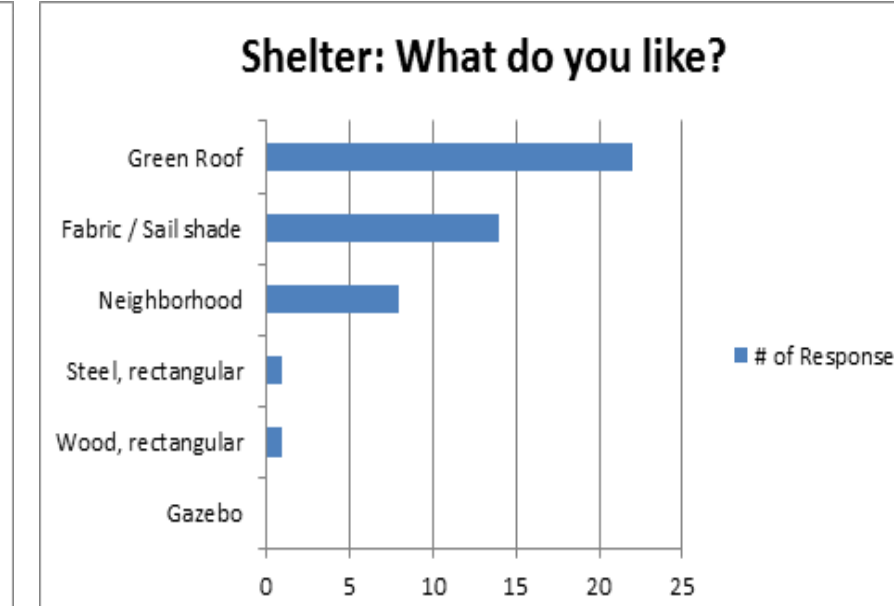
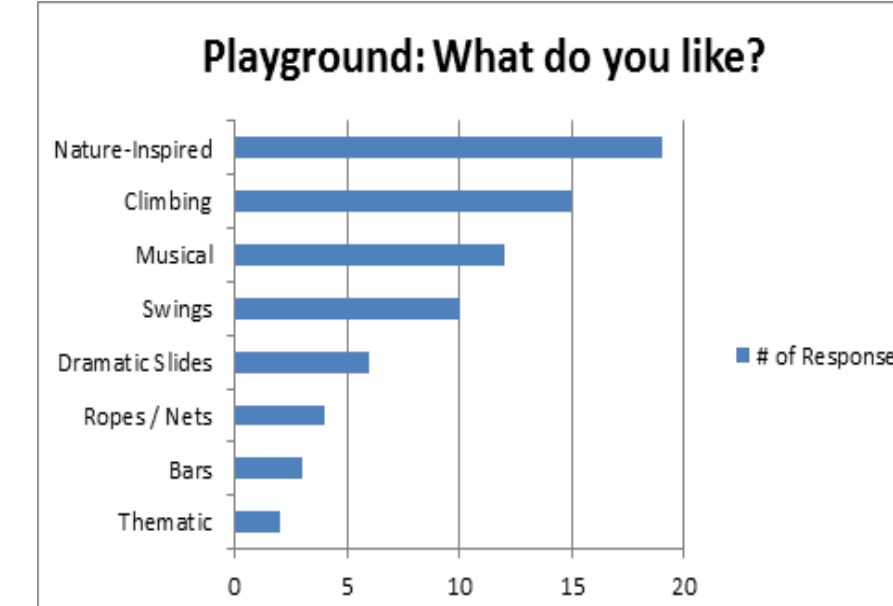
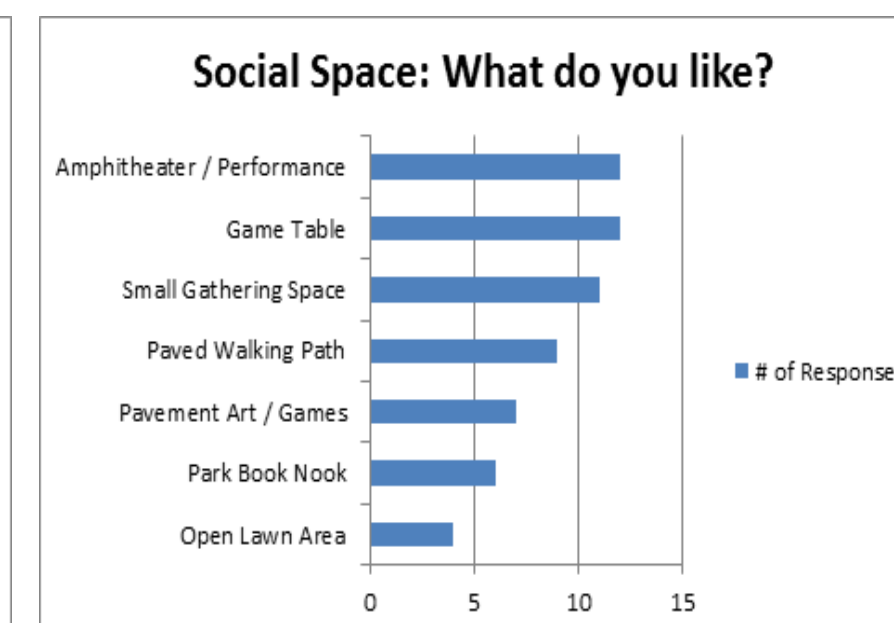
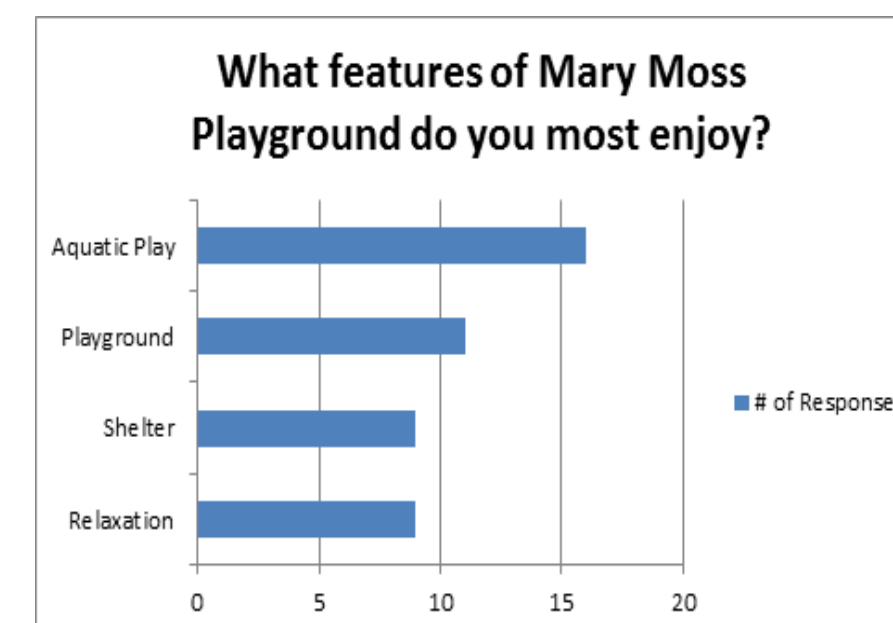
##### 'likes'

...it's right down the street, safety of the children, a great place to meet up for a cuppa, toddler-friendly swings, climbing equipment, love the location/great place for people to gather, children can play - safe area, park is in a great spot to come together, very close to home, small - meant for toddlers, that it is for small children (toddlers primarily), that it is a great (and adequate size) space for gatherings with neighbors, that it is well - but not overly used, neighborly friendly, good place to take my 4yr. old daughter, small scale, more inviting for young children, gem in high density neighborhood, easy access by young children, 2 affordable housing units on lot 71 & 72, convenience to neighborhood children, pool is great, reading in summer, available for parties, free

##### 'dislikes'

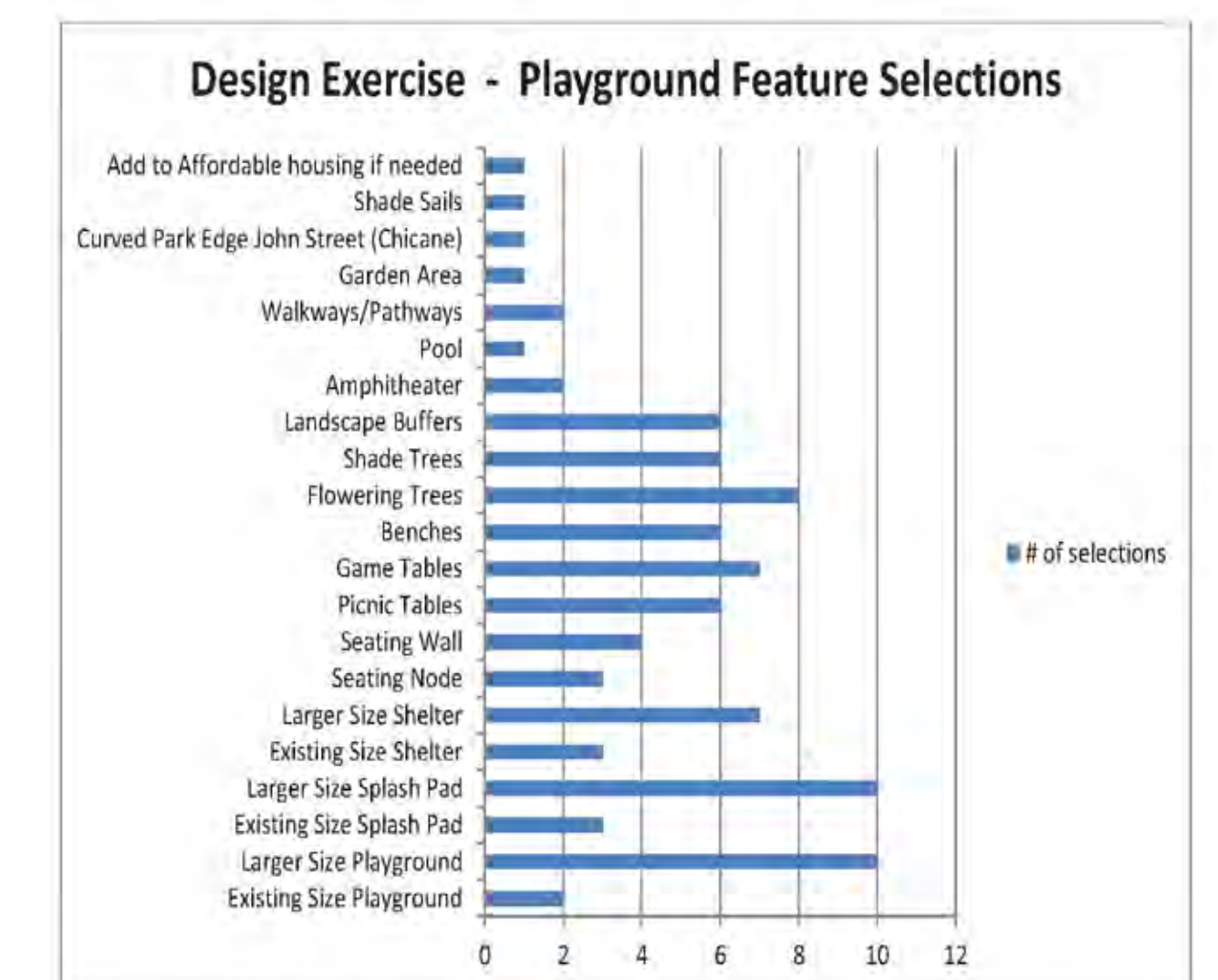
...there are not enough plants, maybe upgrade surfaces around playground equipment so more kid friendly, that it doesn't have its own bathroom, often empty - pool was unused often and dangerous when water not in it, more older children equipment, pool is never open but has water when we are there, too small, not enough things for older age people (teens), in need of some renovation but not expansion, too much concrete, I realize that is mostly because of the kiddie pool but other than summer the space seems wasted, need landscaping and fencing seems too high, needs restrooms, pool is not open full day or full summer, teen activity at night

#### Most Popular Site Features



#### Design Exercise Trends

Which design selections were used the most within each plan



### Incorporating the input into the concepts



Input analysis: Nature inspired play was a popular idea. *Concept B* includes a slide and climber built into the existing slope for children. Both concepts will consider nature inspired playground equipment.



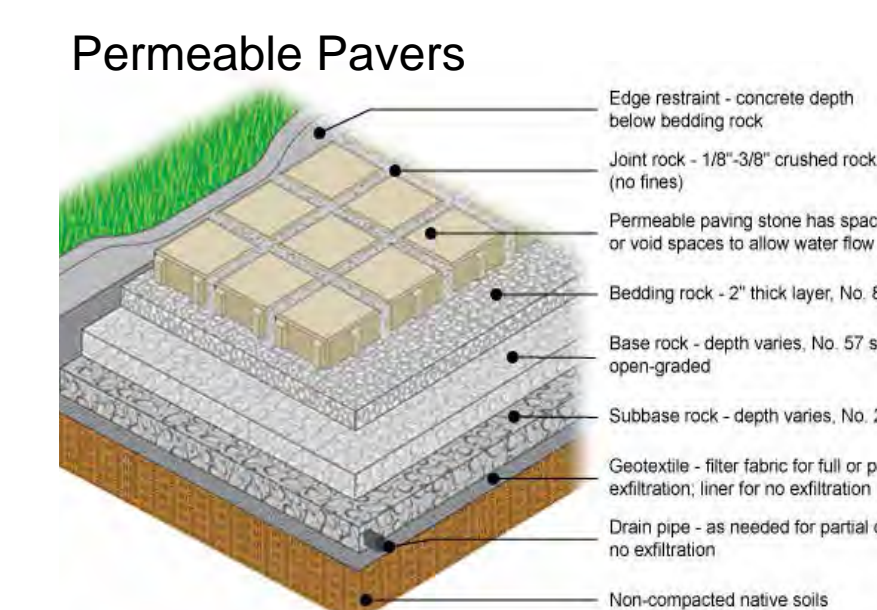
Input analysis: Park play should be for younger children. *Aquatic & playground equipment* will be primarily focused on younger children.



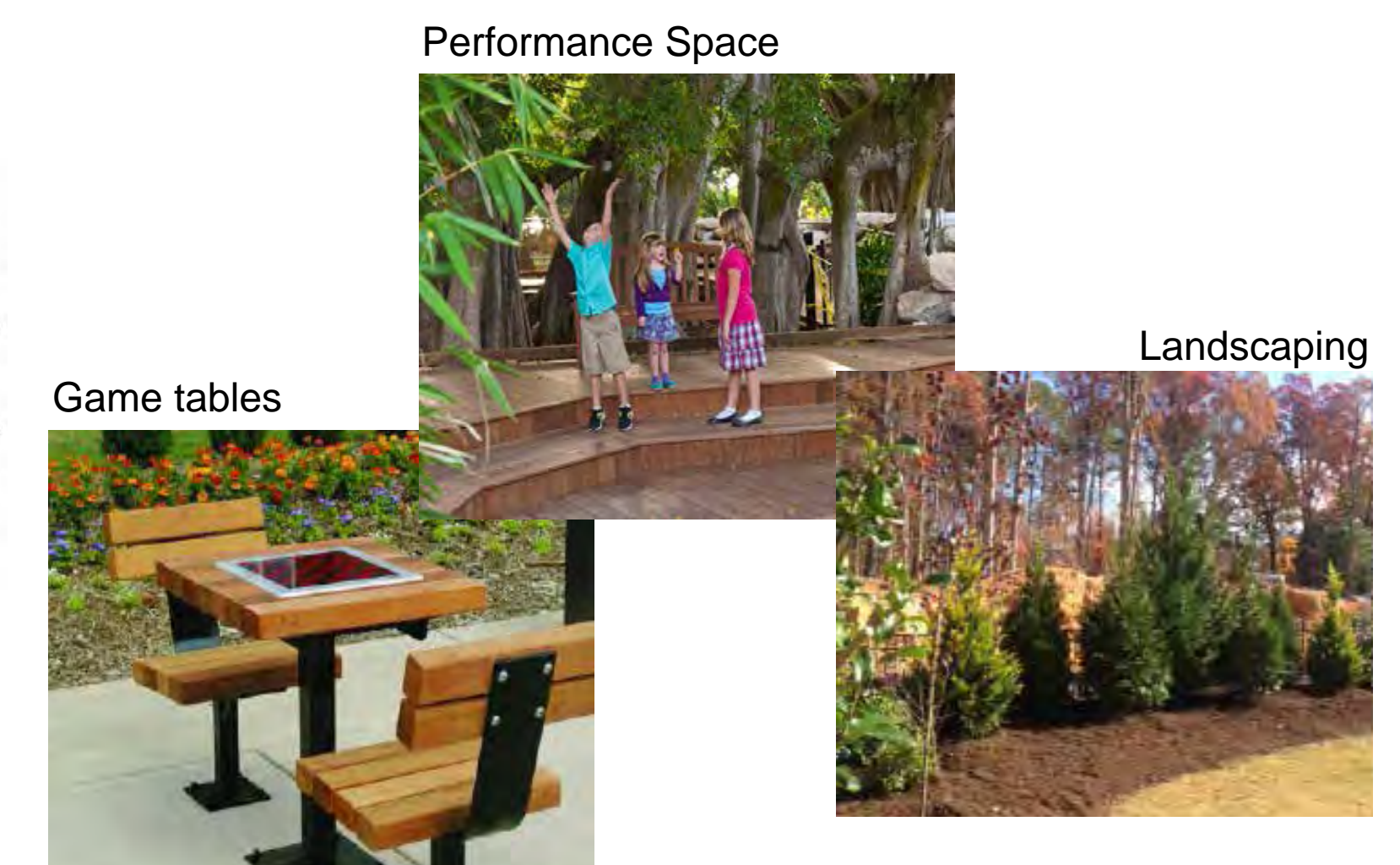
Input analysis: Incorporate interpretive/ cultural heritage... Mary Moss legacy. Each concept identifies an interpretive element.



Input analysis: Aquatic & playground areas are important and should remain the main focus. These areas remain prominent in the new concepts.



Input analysis: Environmentally friendly elements should be considered such as a 'green roof shelter' option shown at Meeting #1. *Materials for the concept include permeable pavers. We are also investigating crushing existing, onsite concrete for reuse as aggregate in the new plan*



Input analysis: Game tables, performance space and landscape buffers were generally seen as good items to incorporate. Both concepts have included opportunities for informal performance space as well as landscape buffers within the concepts.